



REPUBLIC OF KENYA
TURKANA COUNTY GOVERNMENT



**TENDER DOCUMENT
FOR
PROPOSED CONSTRUCTION
OF
DISPENSARY BLOCK, STAFF HOUSE AND PIT LATRINE
AT LOCHOR EDOME IN LAPUR WARD, TURKANA
COUNTY**

OPENING/CLOSING DATE: 15th February, 2023 (11:00am)

Tender No: TCG/MOH/082/2022-2023

Negotiation No: 1168931

Issued By:-

Directorate of Public Works,
Turkana County Government,
P. O. Box 11, 30500
LODWAR

REPUBLIC OF KENYA

TURKANA COUNTY GOVERNMENT: BILLS OF QUANTITIES

SUPPLIED AS PART OF THE CONTRACT

**FOR PROPOSED CONSTRUCTION OF DISPENSARY BLOCK, STAFF HOUSE
AND PIT LATRINE AT LOCHOR EDOME IN LAPUR WARD, TURKANA COUNTY.**

ISSUED BY: ARCHITECTURAL DEPARTMENT
P. O. BOX 11, LODWAR.

The contract for the above mentioned works, entered into on the day of 2020, by the undersigned parties, refer to these Bills of Quantities consisting of pages numbers as shown on index page and the General Specification dated 1976, together with any amendments thereto issued since the date of publication, both of which shall be read and construed as part of the said contract.

.....
CONTRACTOR

.....
CHIEF OFFICER, [MITPW]

Date

Date

SPECIAL NOTES

The contractor is required to check the numbers of the pages of the Bills of Quantities together with all collections and summaries and should be find any missing or in duplicate or the figures indistinct, he must inform the Project Manager, Turkana County Government, P. O. Box 11, LODWAR.

Should the contractor be in doubt about the precise meaning of any items or figure, for any reason whatsoever, he must inform the Project Manager, Turkana County Government, Lodwar in order that the correct meaning may be decided before the date for submission of Tenders.

No liability will be admitted, no claim allowed, in respect of errors in the contractor's Tender due to mistakes in the Bills of Quantities which should have been rectified in the manner described above.

STANDARD TENDER DOCUMENT FOR PROCUREMENT OF WORKS

(BUILDING WORKS)

TABLE OF CONTENTS

PAGE

SECTION I -	INSTRUCTIONS TO TENDERERS	4 - 21
	APPENDIX TO INSTRUCTIONS TO TENDERERS	22
SECTION II -	CONDITIONS OF CONTRACT, PART I -GENERAL CONDITIONS.....	
SECTION III-	CONDITIONS OF CONTRACT, PART II -CONDITIONS OF PARTICULAR APPLICATION	
SECTION IV -	SPECIFICATIONS.....	
SECTION V -	DRAWINGS.....	
SECTION VI -	BILLS OF QUANTITIES.....	
SECTION VII -	STANDARD FORMS.....	

SECTION I - INSTRUCTIONS TO TENDERERS

TABLE OF CLAUSES

<u>CLAUSE NUMBERS</u>		<u>PAGE</u>
<u>DESCRIPTION</u>		
<u>GENERAL</u>		
1. Definitions		6
2. Eligibility and Qualification Requirements		6
3. Cost of Tendering		7
<u>TENDER DOCUMENT</u>		
4. Tender Documents		8
5. Clarification of Tender Documents		9
6. Ammendment of Tender Documents		9
<u>PREPARATION OF TENDER</u>		
7. Language of Tender		10
8. Documents Comprising the Tender		10
9. Tender Prices		10
10. Currencies of Tender and Payment		11
11. Tender Validity		12
12. Tender Surety		12
13. No Alternative Offers		13
14. Pre-tender meeting		13
15. Format and Signing of Tenders		14
<u>SUBMISSION OF TENDERS</u>		
16. Sealing and Marking of Tenders		14
17. Deadline and Submission of Tenders		15
18. 19. Modification and Withdrawal of Tenders		15
<u>TENDER OPENING AND EVALUATION</u>		
20. Tender Opening		16
21. Process to be Confidential		16

22.	22. Clarification of Tenders	17
23.	Determination of Responsiveness	17
24.	Correction of Errors	18
25.	Conversion to Single Currency	18
26.	Evaluation and Comparison of Tenders	19

AWARD OF CONTRACT

27.	Award Criteria	20
28.	Notification of Award	20
29.	Performance Guarantee	21
30.	Advance Payment	21
31.	Appendix to Instructions to Tenderers	21

SECTION I - INSTRUCTION TO TENDERERS

Note: The tenderer must comply with the following conditions and instructions and failure to do so is liable to result in rejection of the tender.

GENERAL

1. Definitions

- (a) “Tenderer” means any persons, partnership firm or company submitting a sum or sums in the Bills of Quantities in accordance with the Instructions to Tenderers, Conditions of Contract Parts I and II, Specifications, Drawings and Bills of Quantities for the work contemplated, acting directly or through a legally appointed representative.
- (b) “Approved tenderer” means the tenderer who is approved by the Employer
- (c) Any noun or adjective derived from the word “tender” shall be read and construed to mean the corresponding form of the noun or adjective “bid”. Any conjugation of the verb “tender” shall be read and construed to mean the corresponding form of the verb “bid.”
- (d) “Employer” means a Central Government Ministry, Local Authority, State Corporation or any other Public Institution.

2. Eligibility and Qualification Requirements

2.1 Eligibility requirements

This invitation to tender is open to all tenderers who are qualified as stated in the appendix.

2.2 Qualification Requirements

To be qualified for award of Contract, the tenderer shall provide evidence satisfactory to the Employer of their eligibility under Sub clause 2.1. above and of their capability and adequacy of resources to effectively carry out the subject Contract. To this end, the tenderer shall be required to update the following information already submitted during prequalification: -

- (a) Details of experience and past performance of the tenderer on the works of a similar nature and details of current work on hand and other contractual commitments.
- (b) The qualifications and experience of key personnel proposed for administration and execution of the contract, both on and off site. carrying out the Contract. Only reliable plant in good working order

and suitable for the work required of it shall be shown on this schedule. The tenderer will also indicate on this schedule when each item will be available on the Works. Included also

should be a schedule of plant, equipment and material to be imported for the purpose of the Contract, giving details of make, type, origin and CIF value as appropriate.

- (c) Details of sub-contractors to whom it is proposed to sublet any portion of the Contract and for whom authority will be requested for such subletting in accordance with clause 4 of the Condition of Contract.
- (d) A draft Program of Works in the form of a bar chart and Schedule of Payment which shall form part of the Contract if the tender is accepted. Any change in the Program or Schedule shall be subjected to the approval of the Engineer.
- (e) Details of any current litigation or arbitration proceedings in which the tenderer is involved as one of the parties.

2.3 Joint Ventures

Tenders submitted by a joint venture of two or more firms as partners shall comply with the following requirements: -

- (a) The tender, and in case of a successful tender, the Form of Agreement, shall be signed so as to be legally binding on all partners
- (b) One of the partners shall be nominated as being in charge, and this authorization shall be evidenced by submitting a power of attorney signed by legally authorized signatories of all the partners
- (c) The partner in charge shall be authorized to incur liabilities and receive instructions for an on behalf of any and all partners of the joint venture and the entire execution of the Contract including payment shall be done exclusively with the partner in charge.
- (d) All partners of the joint venture shall be liable jointly and severally for the execution of the Contract in accordance with the Contract terms, and a relevant statement to this effect shall be included in the authorization mentioned under (b) above as well as in the Form of Tender and the Form of Agreement (in case of a successful tender)
- (e) A copy of the agreement entered into by the joint venture partners shall be submitted with the tender.

3. Cost of Tendering

- 3.1 The Tenderer shall bear all costs associated with the preparation and submission of his tender and the Employer will in no case be responsible or

liable for those costs, regardless of the conduct or outcome of the tendering process.

- 3.2 The price to be charged for the tender document shall be free.
- 3.3 The procuring entity shall allow the tenderer to view the tender document free of charge.

TENDER DOCUMENTS

5 Tender Documents

5.1 The Tender documents comprise the documents listed here below and should be read together with any Addenda issued in accordance with Clause 7 of these instructions to tenderers.

- a. Form of Invitation for Tenders
- b. Instructions to Tenderers
- c. Form of Tender
- d. Appendix to Form of Tender
- e. Form of Tender Surety
- f. Statement of Foreign Currency Requirements
- g. Tender and Confidential Business Questionnaires
- h. Details of Sub contractors
- i. Schedules of Supplementary Information
- j. General Conditions of Contract - Part I
- k. Conditions of Particular Application - Part II
- l. Specifications
- m. Bills of Quantities
- n. Drawings
- o. Declaration Form

5.2 The tenderer is expected to examine carefully all instructions, conditions, forms, terms, specifications and drawings in the tender documents. Failure to comply with the requirements for tender submission will be at the tenderer's own risk. Pursuant to clause 22 of Instructions to Tenderers, tenders which are not substantially responsive to the requirements of the tender documents will be rejected.

5.3 All recipients of the documents for the proposed Contract for the purpose of submitting a tender (whether they submit a tender or not) shall treat the details of the documents as “private and confidential”.

6 Inquiries by tenderers

6.1 A tenderer making an inquiry relating to the tender document may notify the Employer in writing or by telex, cable or facsimile at the Employer’s mailing address indicated in the Invitation to Tender. The Employer will respond in writing to any request for clarification which he receives earlier than 7 days prior to the deadline for the submission of tenders. Written copies of the Employer’s response (including the query but without identifying the source of the inquiry) will be sent to all prospective tenderers who have purchased the tender documents.

6.2 The procuring entity shall reply to any clarifications sought by the tenderer within 3 days of receiving the request to enable the tenderer to make timely submission of its tender.

7 Amendment of Tender Documents

7.1 At any time prior to the deadline for submission of tenders the Employer may, for any reason, whether at his own initiative or in response to a clarification requested by a prospective tenderer, modify the tender documents by issuing Addenda.

7.2 Any Addendum will be notified in writing or by cable, telex or facsimile to all prospective tenderers who have purchased the tender documents and will be binding upon them.

7.3 In order to allow prospective tenderers reasonable time in which to take the Addendum into account in preparing their tenders, the Employer may, at his discretion, extend the deadline for the submission of tenders.

PREPARATION OF TENDERS

8 Language of Tender

8.1 The tender and all correspondence and documents relating to the tender exchanged between the tenderer and the Employer shall be written in the English language. Supporting documents and printed literature furnished by the tenderer with the tender may be in another language provided they are accompanied by an appropriate translation of pertinent passages in the above stated language. For the purpose of interpretation of the tender, the English language shall prevail.

9 Documents Comprising the Tender

9.1 The tender to be prepared by the tenderer WILL BE SUBMITTED ONLINE and shall comprise:

- i. the Form of Tender and Appendix thereto,
- ii. a Tender Security
- iii. the Priced Bills of Quantities and Schedules
- iv. The information on eligibility and qualification
- v. Any other materials required to be completed and submitted in accordance with the Instructions to Tenderers.

The Forms, Bills of Quantities and Schedules provided in the tender documents shall be used without exception (subject to extensions of the schedules in the same format and to the provisions of clause 13.2 regarding the alternative forms of Tender Surety).

10 Tender Prices

10.1 All the insertions made by the tenderer shall be made in INK and the tenderer shall clearly form the figures. The relevant space in the Form of Tender and Bills of Quantities shall be completed accordingly without interlineations or erasures except those necessary to correct errors made by the tenderer in which case the erasures and interlineations shall be initiated by the person or persons signing the tender.

10.2 A price or rate shall be inserted by the tenderer for every item in the Bills of Quantities whether the quantities are stated or not. Items against which no rate or price is entered by the tenderer will not be paid for by the Employer when executed and shall be deemed covered by the rates for other items and prices in the Bills of Quantities.

The prices and unit rates in the Bills of Quantities are to be the full [all- inclusive] value of the Work described under the items, including all costs and expenses which may be necessary and all general risks, liabilities and obligations set forth or implied in the documents on which the tender is based. All duties, taxes and other levies payable by the Contractor under the Contract, or for any other cause prior to the deadline for submission of tenders, shall be included in the rates and prices and the total Tender Price submitted by the tenderer.

Each price or unit rate inserted in the Bills of Quantities should be a realistic estimate for completing the activity or activities described under that particular item and the tenderer is advised against inserting a price or rate against any item contrary to this instruction.

Every rate entered in the Bills of Quantities, whether or not such rate be associated with a quantity, shall form part of the Contract. The Employer shall have the right to call for any item of work contained in the Bills of Quantities, and such items of work to be paid for at the rate entered by the tenderer and it is the intention of the Employer to take full advantage of unbalanced low rates.

10.3 Unless otherwise specified the tenderer must enter the amounts representing 10% of the sub-total of the summary of the Bills of Quantities for Contingencies and Variation of Prices[V.O.P.] payments in the summary sheet and add them to the subtotal to arrive at the tender amount.

10.4 The tenderer shall furnish with his tender written confirmation from his suppliers or manufacturers of basic unit rates for the supply of items listed in the Conditions of Contract clause 70 where appropriate. The Employer may require the tenderer to justify such rates so obtained from the suppliers or manufacturers.

10.5 The rates and prices quoted by the tenderer are subject to adjustment during the performance of the Contract only in accordance with the Provisions of the Conditions of Contract. The tenderer shall complete the schedule of basic rates and shall submit with his tender such other supporting information as required under clause 70 of the Conditions of Contract Part II.

10.6 CONTRACT PRICE VARIATIONS- Contract price variations shall not be allowed within the first 12 months of the contract.
This may only apply under exceptional circumstances as determined and upon recommendations by CIT in compliance with the relevant sections of the Public Procurement and Assets Disposal Act and regulations.

CONTRACT PRICE AND SCOPE OF WORK: Tender and contracts price and payments schedule will be based on the scope of work and actual deliverables as per this tender documents and the contract under this tender.

10.7 Where quantity contract variation is allowed, the variation shall not exceed 110% of the original contract quantity.

10.8 Price variation requests shall be processed by the procuring entity within 30 days of receiving the request.

11 Currencies of Tender and Payment

PAYMENTS SCHEDULE- The Contract Implementation Committee shall prepare a work breakdown schedule and specify milestones against which payments will be approved and effected.

11.1 Tenders shall be priced in Kenya Shillings and the tender sum shall be in Kenya Shillings.

11.2 Tenderers are required to indicate in the Statement of Foreign Currency Requirements, which forms part of the tender, the foreign currency required by them. Such currency should generally be the currency of the country of the tenderer's main office. However, if a substantial portion of the tenderer's expenditure under the Contract is expected to be in countries other than his country of origin, then he may state a corresponding portion of the contract price in the currency of those other countries. However, the foreign currency element is to be limited to two (2) different currencies and a maximum of 30% (thirty percent) of the Contract Price.

11.3 The rate or the rates of exchange used for pricing the tender shall be the selling rate or rates of the Central Bank ruling on the date thirty (30) days before the final date for the submission of tenders.

11.4 Tenderers must enclose with their tenders, a brief justification of the foreign currency requirements stated in their tenders.

12 Tender Validity

12.1 The tender shall remain valid and open for acceptance for a period of sixty (60) days from the specified date of tender opening or from the extended date of tender opening (in accordance with clause 7.4 here above) whichever is the later.

12.2 In exceptional circumstances prior to expiry of the original tender validity period, the Employer may request the tenderer for a specified extension of the period of validity. The request and the responses thereto shall be made in writing or by cable, telex or facsimile. A tenderer may refuse the request without forfeiting his Tender Surety. A tenderer agreeing to the request will not be required nor permitted to modify his tender, but will be required to extend the validity of his Tender Surety correspondingly.

12.3 TENDER & CONTRACT DURATION- This tender is for the period of Months / Years. The effective date for any supplies or works contracts or service provision Contract shall be specified in the Contract documents and as determined by the CIT.

12.4 CONTRACT EXTENSION- the this Tender and subsequent contract under this tender maybe extended based on the assessments and recommendations of the CIT and upon request by the Tenderer or the client.

12.5 CONTRACT TERMINATION - this Tender and subsequent contracts maybe terminated for breach of its terms and conditions and for performance related issues and breaches of Kenyan laws.

13 Tender Security

13.1 The tenderer shall furnish as part of his tender, a Tender Security in the amount and form stated in the Appendix to Instructions to Tenderers.

13.2 The tender security shall not exceed 2 percent of the tender price.

13.3 The Tender Security shall be valid at least thirty (30) days beyond the tender validity period.

13.4 Any tender not accompanied by an acceptable Tender Surety will be rejected by the Employer as non-responsive.

13.5 The Tender Sureties of unsuccessful tenderers will be returned as promptly as possible as but not later than twenty eight (28) days after expiration of the tender validity period. The Tender Surety of the successful tenderer will be returned upon the tenderer executing the Contract and furnishing the required Performance Security.

13.6 The Tender Surety may be forfeited:

- a) if a tenderer withdraws his tender during the period of tender validity: or
- b) in the case of a successful tenderer, if he fails, within the specified time limit
 - i. to sign the Agreement, or
 - ii. to furnish the necessary Performance Security
- c) if a tenderer does not accept the correction of his tender price pursuant to clause 23.

14 No Alternative Offers

14.1 The tenderer shall submit an offer which complies fully with the requirements of the tender documents unless otherwise provided for in the appendix.

Only one tender may be submitted by each tenderer either by himself or as partner in a joint venture. A tenderer who submits or participates in more than one tender will be disqualified.

14.2 The tenderer shall not attach any conditions of his own to his tender. The tender price must be based on the tender documents. The tenderer is not required to present alternative construction options and he shall use without exception, the Bills of Quantities as provided, with the amendments as notified in tender notices, if any, for the calculation of his tender price. Any tenderer who fails to comply with this clause will be disqualified.

15 Pre-tender Meeting

15.1 If a pre-tender meeting is convened, the tenderer's designated representative is invited to attend at the venue and time in the Invitation to Tender. The purpose of the meeting will be to clarify issues and to answer questions on any matter that may be raised at that stage.

15.2 The tenderer is requested as far as possible to submit any questions in writing or by cable, to reach the Employer not later than seven (7) days before the meeting. It may not be practicable at the meeting to answer questions received late, but questions and responses will be transmitted in accordance with the following:

- (a) Minutes of the meeting, including the text of the questions raised and the responses given together with any responses prepared after the meeting will be transmitted without delay to all purchasers of the tender documents. Any modification of the tender documents listed in - Clause 9 which may become necessary as a result of the pre-tender meeting shall be made by the Employer exclusively through the issue of a tender notice pursuant to Clause 7 and not through the minutes of the pre-tender meeting.
- (b) Non-attendance at the pre-bid meeting will not be cause for disqualification of a bidder.

16 Format and Signing of Tenders

16.1 The tenderer shall prepare his tender as outlined in clause 9 above and submit online.

16.2 The copy of the tender and Bills of Quantities shall be typed or written in indelible ink and shall be signed by a person or persons duly authorized to sign on behalf of the tenderer. All pages of the tender where amendments have been made shall be initialed by the person or persons signing the tender.

16.3 The complete tender shall be without alterations, interlineations or erasures, except as necessary to correct errors made by the tenderer, in which case such corrections shall be initialed by the person or persons signing the tender.

SUBMISSION OF TENDERS

17 Sealing and Marking of Tenders

17.1 The tenderer shall submit there bids online as described in clause 9 above

17.2 Appendix to Instructions to Tenderers and bear the name and identification of the Contract stated in the said Appendix with a warning not to open before the date and time for opening of tenders stated in the said Appendix.

17.3 Late submission will not be accepted.

17.4 A tender opened prematurely for this cause will be rejected by the Employer and returned to the tenderer.

18 Deadline for Submission of Tenders

18.1 Tenders must be received by the Employer at the address specified in clause 17.2 and on the date and time specified in the Letter of Invitation, subject to the provisions of clause 7.4, 18.2 and 18.3.

Tenders delivered by hand must be placed in the “tender box” provided in the office of the Employer.

Proof of posting will not be accepted as proof of delivery and any tender delivered after the above stipulated time, from whatever cause arising will not be considered.

18.2 The Employer may, at his discretion, extend the deadline for the submission of tenders through the issue of an Addendum in accordance with clause 7, in which case all rights and obligations of the Employer and the tenderers previously subject to the original deadline shall thereafter be subject to the new deadline as extended.

18.3 Any tender received by the Employer after the prescribed deadline for submission of tender will be returned unopened to the tenderer.

19 Modification and Withdrawal of Tenders

19.1 The tenderer may modify or withdraw his tender after tender submission, provided that written notice of the modification or withdrawal is received by the Employer prior to prescribe deadline for submission of tenders.

19.2 The tenderer’s modification or withdrawal notice shall be prepared, sealed, marked and dispatched in accordance with the provisions for the submission of tenders, with the inner and outer envelopes additionally marked “MODIFICATION” or “WITHDRAWAL” as appropriate.

19.3 No tender may be modified subsequent to the deadline for submission of tenders.

19.4 No tender may be withdrawn in the interval between the deadline for submission of tenders and the period of tender validity specified on the tender form. Withdrawal of a tender during this interval will result in the forfeiture of the Tender Surety.

19.5 Subsequent to the expiration of the period of tender validity prescribed by the Employer, and the tenderer having not been notified by the Employer of the award of the Contract or the tenderer does not intend to conform with the request of the Employer to extend the period of tender validity, the tenderer may withdraw his tender without risk of forfeiture of the Tender Surety.

TENDER OPENING AND EVALUATION

20 Tender Opening

20.1 The Employer will open the tenders in the presence of the tenderers' representatives who choose to attend at the time and location indicated in the Letter of Invitation to Tender. The tenderers' representatives who are present shall sign a register evidencing their attendance.

20.2 Tenders for which an acceptable notice of withdrawal has been submitted, pursuant to clause 19, will not be opened. The Employer will examine the tenders to determine whether they are complete, whether the requisite Tender Sureties have been furnished, whether the documents have been properly signed and whether the tenders are generally in order.

20.3 At the tender opening, the Employer will announce the tenderer's names, total tender price, tender price modifications and tender withdrawals, if any, the presence of the requisite Tender Surety and such other details as the Employer, at his discretion, may consider appropriate. No tender shall be rejected at the tender opening except for late tenders.

20.4 The Employer shall prepare minutes of the tender opening including the information disclosed to those present.

20.5 Tenders not opened and read out at the tender opening shall not be considered further for evaluation, irrespective of the circumstances.

21 Process to be Confidential

21.1 After the public opening of tenders, information relating to the examination, clarification, evaluation and comparisons of tenders and recommendations concerning the award of Contract shall not be disclosed to tenderers or other persons not officially concerned with such process until the award of Contract is announced.

21.2 Any effort by a tenderer to influence the Employer in the process of examination, evaluation and comparison of tenders and decisions concerning award of Contract may result in the rejection of the tenderer's tender.

22 Clarification of Tenders

22.1 To assist in the examination, evaluation and comparison of tenders, the Employer may ask tenderers individually for clarification of their tenders, including breakdown of unit prices. The request for clarification and the response shall be in writing or by cable, facsimile or telex, but no change in the price or substance of the tender shall be sought, offered or permitted except as required to confirm the

correction of arithmetical errors discovered by the employer during the evaluation of the tenders in accordance with clause 24.

22.2 No tenderer shall contact the Employer on any matter relating to his tender from the time of the tender opening to the time the Contract is awarded. If the tenderer wishes to bring additional information to the notice of the Employer, he shall do so in writing.

23 Determination of Responsiveness

23.1 Prior to the detailed evaluation of tenders, the Employer will determine whether each tender is substantially responsive to the requirements of the tender documents.

23.2 For the purpose of this clause, a substantially responsive tender is one which conforms to all the terms, conditions and specifications of the tender documents without material deviation or reservation. A material deviation or reservation is one which affects in any substantial way the scope, quality, completion timing or administration of the Works to be undertaken by the tenderer under the Contract, or which limits in any substantial way, inconsistent with the tender documents, the Employer's rights or the tenderers obligations under the

Contract and the rectification of which would affect unfairly the competitive position of other tenderers who have presented substantially responsive tenders.

23.3 Each price or unit rate inserted in the Bills of Quantities shall be a realistic estimate of the cost of completing the works described under the particular item including allowance for overheads, profits and the like.

Should a tender be seriously unbalanced in relation to the Employer's estimate of the works to be performed under any item or groups of items, the tender shall be deemed not responsive.

23.4 A tender determined to be not substantially responsive will be rejected by the Employer and may not subsequently be made responsive by the tenderer by correction of the non-conforming deviation or reservation.

24 Correction of Errors

Tenders determined to be substantially responsive shall be checked by the Employer for any arithmetic errors in the computations and summations. Errors will be corrected by the Employer as follows:

- (a) Where there is a discrepancy between the amount in figures and the amount in words, the amount in words will govern.
- (b) Where there is a discrepancy between the unit rate and the line item total resulting from multiplying the unit rate by the quantity, the unit rate as quoted will prevail, unless in the opinion of the Employer, there is an obvious typographical error, in which case adjustment will be made to the entry containing that error.
- (c) In the event of a discrepancy between the tender amount as stated in the Form of Tender and the corrected tender figure in the main summary of the Bills of Quantities, the amount as stated in the Form of Tender shall prevail.
- (d) The Error Correction Factor shall be computed by expressing the difference between the tender amount and the corrected tender sum as a percentage of the corrected builder's work (i.e. corrected tender sum less Prime Cost and Provisional Sums).
- (e) The Error Correction Factor shall be applied to all builder's work (as a rebate or addition as the case may be) for the purposes of valuations for Interim Certificates and valuations of variations.
- (f) The amount stated in the tender will be adjusted in accordance with the above procedure for the correction of errors and, with concurrence of the tenderer, shall be considered as binding upon the tenderer. If

the tenderer does not accept the corrected amount, the tender may be rejected and the Tender Security may be forfeited in accordance with clause 13.

25 Conversion to Single Currency

25.1 For compensation of tenders, the tender price shall first be broken down into the respective amounts payable in various currencies by using the selling rate or rates of the Central Bank of Kenya ruling on the date twenty one (21) days before the final date for the submission of tenders.

25.2 The Employer will convert the amounts in various currencies in which the tender is payable (excluding provisional sums but including Day works where priced competitively) to Kenya Shillings at the selling rates stated in clause 25.1.

26 Evaluation and Comparison of Tenders

26.1 The Employer will evaluate only tenders determined to be substantially responsive to the requirements of the tender documents in accordance with clause 23.

26.2 In evaluating tenders, the Employer will determine for each tender the evaluated tender price by adjusting the tender price as follows:

- (a) Making any correction for errors pursuant to clause 24.
- (b) Excluding Provisional Sums and provision, if any, for Contingencies in the Bills of Quantities, but including Day works where priced competitively.

EVALUATION CRITERIA

Evaluation of tenders shall be carried out in accordance with the criteria set out in this tender document. The evaluation shall be as follows:

- a) Preliminary Evaluation
 - b) Technical and
 - c) Financial Evaluation

Preliminary Evaluation Criteria

No.	Mandatory Requirements	Yes / No.
1.	Authentic Certificate of Incorporation/Registration for the bidding Company.	
2.	Valid and authentic copy of CR12 for the Company Director(s) details.	
3.	Authentic most recent valid Tax Compliance Certificate for the bidding company.	
4.	Copy of form of tender duly filled, signed and stamped.	
5.	Copy of Business Questionnaire duly filled, signed and stamped.	
6.	Copy of duly filled and signed form of Bill of quantities.	
7.	Valid National Construction Authority (NCA-8 and above) registration certificate in Construction works.	
8.	Valid Copy of annual NCA practicing License for Construction works.	
9.	Attach dully filled Tender Securing Declaration form for Special Groups.	

At this stage, the Tenderer's submission will either be Responsive or Non-Responsive.

Failure to Provide any of the above mandatory requirements will lead to disqualification.

Technical Evaluation

No	Requirements	Evidence	Max. Score	Score Awarded.
1.	Experience	Previous experience detailing similar projects undertaken successfully (a)evidence of Completion Certificates/LSOs for the respective projects to the proposed works in terms of the physical size and complexity (10 marks, each Completion certificate 5 mark) Above 2 Completion Certificates /LSOs (10 Marks)	10	
2.		Experience in other works or supplies. (Attach LPO's/LSO's/ completion certificates) 1 LPO/LSO/ completion certificates = 5Marks 2 LPO/LSO's/ completion certificates & above = 10Marks	10	
3.	Equipment	Attach signed and stamped copy of relevant equipment for this work - (10 marks) with prove of ownership. List of Equipment -5 marks and Prove of Ownership -1 marks for each Equipment (Minimum of 5 Equipment)	10	

4. Qualified Technical Staff	CVs, academic and professional certificates (15 Marks)		15
	(a) Project Manager who is a holder of a degree in relevant construction discipline with a minimum of 2 years' relevant work experience -10 marks		
	(b) Site Agent who is a holder of a degree/diploma in relevant construction discipline -5 marks		
		Degree	
	Project Manager.	5	5
	Site Agent.	2.5	2.5
5. Financial Capacity	(a) Provide Company Audited Statements of Accounts for the last Two years: 2020/2021 & 2021/2022, certified by a reputable Audit Firm. (2.5 Marks for Each Year Provided (5 Marks)) (b) Credit Line Reference Attach a letter from a bank- (7marks) (c) Provide Bank Statement for the last 6 (Six) Months to date of Tender – 3 Marks		15
6.	Submit work methodology and schedule giving time lines - 10 marks		10
TOTAL			70

To be considered successful, the candidates must score a minimum score of 50 points out of the maximum 70 points in order to qualify for financial evaluation.

Financial Evaluation

The financial evaluation will be carried out in **two stages**

- a) Determination of Arithmetic Errors
- b) Determination of total price (inclusive of all taxes and discounts)

The bidder who has passed the technical evaluation stage and has quoted the lowest total price (inclusive of all taxes and discounts will be considered the winner)

- 26.3** The Employer reserves the right to accept any variation, deviation or alternative offer. Variations, deviations, alternative offers and other factors which are in excess of the requirements of the tender documents or otherwise result in the accrual of unsolicited benefits to the Employer, shall not be taken into account in tender evaluation.
- 26.4** Price adjustment provisions in the Conditions of Contract applied over the period of execution of the Contract shall not be taken into account in tender evaluation.
- 26.5** If the lowest evaluated tender is seriously unbalanced or front loaded in relation to the Employer's estimate of the items of work to be performed under the Contract, the Employer may require the tenderer to produce detailed price analyses for any or all items of the Bills of Quantities, to demonstrate the relationship between those prices, proposed construction methods and schedules. After evaluation of the price analyses, the Employer may require that the amount of the Performance Security set forth in clause 29 be increased at the expense of the successful tenderer to a level sufficient to protect the Employer against financial loss in the event of subsequent default of the successful tenderer under the Contract.
- 26.6** Firms incorporated in Kenya where indigenous Kenyans own 51% or more of the share capital shall be allowed a 10% preferential bias provided that they do not sub-contract work valued at more than 50% of the Contract Price excluding provisional sums to a non-indigenous sub-contractor.
- 26.7** Preference where allowed in the evaluation of tenders shall not exceed 110%
- 26.8** The procuring entity may at any time terminate procurement proceedings before contract award and shall not be liable to any person for the termination.
- 26.9** The procuring entity shall give prompt notice of the termination to the tenderers and on request give its reasons for termination within 14 days of receiving the request from any tenderer.
- 26.10** A tenderer who gives false information in the tender document about its qualification or who refuses to enter into a contract after notification of contract award shall be considered for debarment from participating in future public procurement.
- 26.11** Poor past performance shall not be used as an evaluation criterion unless specifically provided for in the appendix.

Award Criteria

27.1 Subject to Sub-clause 27.2, the Employer will award the Contract to the tenderer whose tender is determined to be substantially responsive to the tender documents and who has offered the lowest evaluated tender price subject to possessing the capability and resources to effectively carry out the Contract Works as required in Sub-clause 2.1 and 2.2 here above.

27.2 The Employer reserves the right to accept or reject any tender, and to annual the tendering process and reject all tenders, at any time prior to award of Contract, without thereby incurring any liability to the affected tenderers or any obligation to inform the affected tenderers of the grounds for the Employer's action.

28 Notification of Award

28.1 Prior to the expiration of the period of tender validity prescribed by the Employer, the Employer will notify the successful tenderer by cable, telefax or telex and confirmed in writing by registered letter that his Tender has been accepted. This letter (hereinafter and in all Contract documents called "Letter of Acceptance") shall name the sum (hereinafter and in all Contract documents called "the Contract Price") which the Employer will pay to the Contractor in consideration of the execution and completion of the Works as prescribed by the Contract.

28.2 At the same time that the Employer notifies the successful tenderer that his tender has been accepted, the Employer shall notify the other tenderers that the tenders have been unsuccessful.

28.3 Within fourteen [14] days of receipt of the Form of Contract Agreement from the Employer, the successful tenderer shall sign the form and return it to the Employer together with the required Performance Security.

28.4 The parties to the contract shall have it signed within 30 days from the date of notification of contract award unless there is an administrative review request.

29 Performance Guarantee

29.1 Within twenty eight [28] days of receipt of the notification of award from the Employer, the successful tenderer shall furnish the Employer with a Performance Security in the amount stated in the Appendix to Instructions to Tenderers and in the format stipulated in the Conditions of Contract.

29.2 The Performance Security to be provided by the successful tenderer shall be an unconditional Bank Guarantee issued at the tenderer's option by a reputable Bank approved by the Employer and located in the Republic of Kenya and shall be divided into two elements namely, a performance security payable in foreign currencies (based upon the exchange rates determined in accordance with clause 60(5) of the Conditions of Contract) and a performance security payable in Kenya Shillings. The value of the two securities shall be in the same proportions of foreign and local currencies as requested in the form of foreign currency requirements.

29.3 Failure of the successful tenderer to lodge the required Performance Security shall constitute a breach of Contract and sufficient grounds for the annulment of the award and forfeiture of the Tender Security and any other remedy under the Contract. The Employer may award the Contract to the next ranked tenderer.

30 Advance Payment

An advance payment, if approved by the Employer, shall be made under the Contract, if requested by the Contractor, in accordance with clause 60(1) of the Conditions of Contract. The Advance Payment Guarantee shall be denominated in the proportion and currencies named in the form of foreign currency requirements. For each currency, a separate guarantee shall be issued. The guarantee shall be issued by a Bank located in the Republic of Kenya, or a foreign Bank through a correspondent Bank located in the Republic of Kenya, in either case subject to the approval of the Employer.

31 Corrupt or fraudulent practices

31.1 The procuring entity requires that tenderers observe the highest standard of ethics during the procurement process and execution of contracts. A tenderer shall sign a declaration that he has not and will not be involved in corrupt or fraudulent practices.

APPENDIX TO INSTRUCTIONS TO TENDERERS

Notes on the Appendix to Instructions to Tenderers

The following appendix to instructions to tenderers shall complement or amend the provisions of the instructions to tenderers (Section II). Wherever there is a conflict between the provisions of the instructions to tenderers and the provisions of the appendix, the provisions of the appendix herein shall prevail over those of the instructions to tenderers.

CLAUSE

13 Tender Security

Amount of Tender Security is **AS STATED IN TENDER NOTICE**

- 16** (i) The name and address of the Employer for the purposes of submission of tenders is **AS STATED IN TENDER NOTICE**
- (ii) The name of the proposed Works and where available the Contract Number is **AS STATED IN TENDER NOTICE**
- (iii) The tender opening date and time **AS STATED IN TENDER NOTICE**

28 Performance Guarantee

The amount of Performance Security is **10% OF CONTRACT SUM**

CONDITIONS OF CONTRACT, PART I - GENERAL CONDITIONS

The Conditions of Contract, Part I - General Conditions, shall be those forming Part I of the “Conditions of Contract for works of Civil Engineering Construction, Fourth Edition 1987, re-printed in 1992 with further amendments, prepared by the Federation Internationale des Ingenieurs - conseils (FIDIC). The Conditions are subject to variations and additions set out in Part II hereof entitled “Conditions of Contract, Part II - Conditions of Particular Application”.

SECTION III**CONDITIONS OF CONTRACT****PART II (CONDITIONS OF PARTICULAR APPLICATION)****TABLE OF CLAUSES**

CLAUSE NUMBERS	DESCRIPTION	PAGE
1.	Definitions and interpretation.....	24
2.	Engineer's Duties and Authority.....	24
4.	Assignment and sub-contracting	
5.	Contract Document	25
8.	25
<hr/>		
10	Performance security	26
11	Inspection of Site	27
14	Programme to be submitted	27
15	Contractor's superintendence	28
16	Engineers at liberty to object.....	
<hr/>		
19	Safety, security and profession of the environment ...	29
21	Insurance of works and contractors equipment.....	30
23	Third Party Insurance	30
25	Insurance notices	31
26	Compliance with statutes and regulations	31
28	Royalties	32
29	Interference with traffic and Adjoining properties	32
34	Labour	32
41	Commencement and delays	34
42	Possession of site	35
45	Working hours	35
47	Liquidated damage	36
49	Defects liability	36
52	Variations	36
54	Plant, Temporary works and materials	36
55	Quantities	37
56	Measurements	37
58	Provisional sums	38
60	Certificate and payments	40
63	Remedies	46
65	Special Risks	46
67	Settlement of Disputes	46
68	Notices	47
69	Default of Employer	47
<hr/>		
70	Changes in cost and legalization	48

73	Declaration Against waiver	50
74	Bribery and collusion	50
75	Contract Confidential	51
76	Employer's officers	51
77	Taxes and duties	51
78	Joint Ventures	52

SECTION I11
CONDITIONS OF CONTRACT PART II - CONDITIONS OF

PARTICULAR APPLICATION

GENERAL

The Conditions of Contract Part II - Conditions of Particular Application, modify and compliment like-numbered clauses in the Conditions of Contract Part I - General Conditions. Both Parts shall be read together, with the Conditions of Particular Application prevailing in case of conflict or discrepancy. Clauses of the General Conditions not specifically modified and supplemented shall remain in effect.

Clause No.

Definitions and Interpretation

1.1 (a)(i) The said "Employer" shall be **TURKAKNA COUNTY GOVERNMENT** represented by **COUNTY CHIEF OFFICER, DEPARTMENT OF HEALTH & SANITATION.**

1.2 (iv) The said "Engineer" shall be **CHIEF OFFICER, MINISTRY OF INFRASTRUCTURE, TRANSPORT AND PUBLIC WORKS** or any other competent person appointed by the Employer, and notified to the Contractor, to act in replacement of the Engineer.

(b)(i) Insert in line 2 after "the Bills of Quantities", the following, "the rates entered by the Contractor (whether or not such rate be employed in computation of the Contract Price)".

Add the following sub-clause; SECTION C – APPENDIX TO CONDITIONS OF CONTRACT

Name of Authorised Representative: **COUNTY CHIEF OFFICER, DEPARTMENT OF HEALTH & SANITATION., TURKANA COUNTY GOVERNMENT.**

Address; P.O.BOX 11-30500, LODWAR

Telephone: _____

Facsimile: _____

The Project Manager is

Name: **CHIEF OFFICER, MINISTRY OF INFRASTRUCTURE, TRANSPORT AND PUBLIC WORKS**

Address: **P.O.BOX 11-30500, LODWAR**

Telephone: _____

Facsimile: _____

12 WEEKS FROM THE DATE OF POSSESSION

The following documents also form part of the Contract:
AS LISTED IN CLAUSE 2.3 OF THE CONDITION TO CONTRACT

The Contractor shall submit a revised program for the Works within [**SEVEN**] 7days of delivery of the Letter of Acceptance.

The Site Possession Date shall be **AGREED WITH THE PROJECT MANAGER**

The Site is located at **TURKANA COUNTY** and is defined in drawings nos. _____

The Defects Liability period is **180 days.[SIX MONTH FROM THE DATE OF ISSUARANACE OF PRACTICAL COMPLETION CERTIFICATE TO THE CONTRACTOR]**

Other Contractors, utilities etc., to be engaged by the Employer on the Site Include those for the execution of;

1. DRAINAGE WORK

2. CIVIL WORKS

The minimum insurance covers shall be;
CONTRACTORS ALL RISKS INSURANCE

The following events shall also be Compensation Events:

- 1. **NONE [ONLY AS LISTED IN CLAUSE 24 OF THE CONDITIONS OF CONTRACT]**
- 2. _____
- 3. _____
- 4. _____

The period between Program updates is 14 **DAYS**.

The amount to be withheld for late submission of an updated Program is 3% **OF THE CONTRACT SUM**

The proportion of payments retained for defect liability period is **10% OF THE CONTRACT SUM** percent.

The Price Adjustment Clause **SHALL NOT** apply

The liquidated damages for the whole of the Works is Kshs. **100,000** (per day)

The Performance Security shall be for the following minimum amounts equivalent as a percentage of the Contract Price **10 percent** (%)

The Completion Period for the Works is **12[Weeks]**

The rate of exchange for calculation of foreign currency payments is **NOT APPLICABLE**

The schedule of basic rates used in pricing by the Contractor is as attached [Contractor to attach].

Advance Payment **shall not be granted.**

The prices for VAT should be **included** in the unit's prices of billed items but should not be given as **a percentage at the grand summary page.**

The bidder should submit **ONLY ONE ORIGINAL COPY** of the bills of quantities and not two as indicated in clause 4.1 of the instruction to tender.

Withholding Tax of three percentages shall be deducted from the every payment due to the contractor

Engineer's Duties and Authority

2.1 (b) The Engineer shall obtain specific approval of the Employer before taking any of the following actions specified in Part I:

- (i) Consenting to the sub-letting of any part of the Works under clause 4.
- (ii) Certifying additional cost determined under Clause 12
- (iii) Determining an extension of time under Clause 44
- (iv) Issuing a variation under Clause 51 except in an emergency situation as reasonably determined by the Engineer.

-
- (v) Fixing rates or prices under clause 52 **4** **Assignment** **and** **Subcontracting**

4.1 Delete the second and third sentence and substitute:

No single subcontract may be for more than 10 percent of the Contract Price nor shall the sum of all subcontracts exceed 210 percent of the Contract price. No one subcontractor may be awarded subcontracts to a total value greater than 10 percent of the Contract Price. All subcontracts greater than 2 percent of the Contract Price are to have the prior consent of the Engineer. The Contractor shall however, not required such consent for purchases of materials or to place contracts for minor details or for any part of the Works of which the manufacturer of supplier is

named in the Contract. Any such consent shall not relieve the Contractor from any liability or obligation under the Contract and he shall be responsible for the acts, defaults and neglects of any subcontractor, his agents, servants or workmen as fully as if they were the acts, defaults or neglects of the Contractor, his agents, servants or workmen.

Subcontracting- this can be done under exceptional circumstances and upon request by the Tenderer to the Client for consideration and approval.

5 Contract Documents

5.1 (a) The language governing this Contract shall be English.

The “Ruling Language” which shall be used to interpret this Contract shall be English. Communication between the Contractor and Engineer or Engineer’s representative shall be in English.

(b) The law applicable to this Contract shall be the laws of the Republic of Kenya. Except to the extent otherwise provided by the Contract, the Kenyan courts shall have exclusive jurisdiction to hear and to determine all actions and proceedings in connection with and arising out of the Contract, and the Contractor shall submit to the jurisdiction of Kenyan courts for the purpose of any such actions and proceedings.

5.2 Delete the documents listed 1-6 and substitute:

- (1) The Contract Agreement;
- (2) The Notification of Award;
- (3) Tender and Appendix to Form of Tender;
- (4) The Conditions of Contract Part II;
- (5) The Conditions of Contract Part I (FIDIC);
- (6) The Special Specifications;
- (7) The Standard Specifications for Road and Bridge Construction, MOTC - 1986;
- (8) Clarifications and rectifications accepted by the Employer;
and
- (9) The Drawings;
- (10) The priced Bills of Quantities; and
- (11) Schedules and other documents forming part of the

Contract.

8.1 Add to sub clause 8.1 the following:

- (a) Within 28 days after receipt of the Engineer's order to commence the Works, the Contractor shall establish an office at the Site duly equipped for the Contractor's representative and his supervisory personnel.

The Contractor shall maintain this office throughout the Contract period. The said office shall be the legal domicile of the Contractor, and all correspondence sent to this office shall be deemed to have been sent to the Contractor's head office.

- (b) A foreign Contractor or a Kenya-foreign joint venture, if not registered in Kenya under the applicable laws of Kenya, shall undertake registration upon receipt of the letter of acceptance and prior to signing of the Contract.

10.1 Performance Security

In lines 1,2 and 3 delete the words "If the Contract... within 28 days" and substitute "The Contractor shall obtain a Performance Security within 28 days"

Add the following at the end of this Sub-Clause:-

The Performance Security shall be issued by a Bank incorporated in Kenya. The amount of guarantee shall be as stated in the Appendix to Form of Tender.

The bank guarantee, shall be issued either (a) by an established and reputable bank approved by the Employer and located in Kenya or a foreign bank through a correspondent established and reputable bank located in Kenya and approved by the Employer or (b) directly by a foreign bank acceptable to the Employer. The performance security shall normally be in the currency or currencies requested for payment by the Contractor and in the same proportions as those requested for payment in the Contract.

The performance security may, subject to the approval of the Engineer, be adjusted at the end of each period of 12 months to reflect the residual value of the Contract Works.

10.2 The performance guarantee shall be valid until a date 28 days after the date of issue of the Taking-Over Certificate. The security shall be returned to the Contractor within 28

days of the expiration.

10.3 Delete sub-clause 10.3

11.1 Inspection of Site

Add the words “and the Contractor shall be deemed to have based his tender on all the aforementioned” after the words “affect his tender”.

Delete the last paragraph completely and replace with the following:

“The Employer in no way guarantees completeness nor accuracy of the soil, materials, subsurface and hydrological information made available to the Contractor at the time of tendering or at any other time during the period of the Contract, and the Contractor shall be responsible for ascertaining for himself all information as aforesaid for the execution of Works and his tender shall be deemed to have been priced accordingly.

14.1 Programme to be Submitted

The time within which the Programme shall be submitted shall be twenty eight (28) days. This detailed Programme shall be based upon the programme submitted by the Contractor as part of his tender and shall, in no material manner, deviate from the said programme.

The Contractor shall allow in his Programme for the following 11 public holidays per calendar year in Kenya upon which the Contractor shall not be permitted to work

New Year’s Day	(1st January) Good Friday
Easter Monday	
Labour Day	(1 st May)
Madaraka Day	(1 st June) Idd-Ul-Fitr
	29
Moi Day	(10 th October)
Kenyatta Day	(20 th October) Jamhuri Day
	(12 th December)
Christmas Day	(25 th December)
Boxing Day	(26 th December)

The Contractor should also allow per calendar year for a further 2 unspecified public holidays which may be announced by the Government of Kenya with no prior notification, and upon which he shall not be permitted to work.

14.2 Add the following at the end of this sub clause:-

The Employer shall have the right to withhold payment at any time if the Contractor fails to submit the contractual construction programmes in accordance with sub clause 14.1 above or revise construction programmes due to his negligence, failure or omission.

14.3 **Cash Flow Estimate to be Submitted**

The time limit within which a detailed cash flow estimate is to be submitted shall be twenty eight (28) days.

In preparing the estimates, the Contractor shall make provision for Advance payment, repayment of advance, retention, payment for services provided by the Employer and timing implications of sub clause 60 - Certificates and Payments.

15 Contractor's Superintendence

Add the following at the end of the first paragraph of sub-clause 15.1:

15.1 The Contractor shall, within seven (7) days of receipt of the Engineer's order to commence the Works, inform the Engineer in writing, the name of the Contractor's representative and the anticipated date of his arrival on Site.

Add the following sub-clause 15.2:

15.2 The Contractor's agent or representative on the Site shall be an Engineer registered by the Engineer's Registration Board of Kenya in accordance with the Laws of Kenya cap. 530 or have equivalent status approved by the Engineer and shall be able to read, write and speak English fluently.

16.2 **Engineer at Liberty to object**

At the end of this clause add "by a competent substitute approved by the Engineer at the Contractor's own expense".

The Contractor is encouraged to the extent practicable and reasonable, to employ staff and labour with appropriate qualifications who are Kenyan citizens.

Safety, Security and Protection of the Environment

19.1 Add at the end of sub clause 19.1 the following: -

The formulation and enforcement of an adequate safety program shall be the obligation of the Contractor with respect to all the Works under this Contract, regardless of whether performed by the Contractor or his subcontractors. The Contractor shall, within 14 days after commencement of the Works, meet the Engineer to present and discuss his plan for the establishment of such safety measures as may be necessary to provide against accidents, unsafe acts and so forth. Within 28 days after commencement of the Works, the Contractor shall submit a written safety program to the Engineer covering the overall Works and based on the laws and regulations of Kenya. In addition, he shall prepare special safety programs for blasting and handling of explosives as stipulated in the General and Special Specifications.

Notwithstanding the foregoing, the Contractor shall observe the following measures with a view to reducing or eliminating adverse environmental effects by the Site Works:

- (i) All queries and borrow pits shall be filled and landscaped to their original state after extraction of construction material
- (ii) Soil erosion due to surface runoff or water from culverts or other drainage structures should be avoided by putting in place proper erosion control measures that shall include, but not limited to grassing , planting of trees, gabions etc.
- (iii) Long traffic diversion roads shall be avoided so as to minimize the effect of dust on the surrounding environment. In any case all diversions shall be kept damp and dust free at the Contractor's expense.
- (iv) Spillage of oils, fuels and lubricants shall be avoided and if spilt, shall be collected and disposed off in such a way as not to adversely affect the environment.
- (v) Rock blasting near settlement areas shall be properly coordinated with the relevant officers of the Government so as to minimize noise pollution and community interference.
- (vi) Dumping shall be done only at designated dumping areas and not haphazardly on surroundings.

Insurance of Works & Contractor's Equipment

21.1 (a) Delete the first sentence of this clause and replace with the following:

“Prior to commencement of the Works the Contractor shall, without limiting his or the Employer’s obligations and responsibilities under Clause 20, insure to the satisfaction of the Employer.”

(b) Add the following words at the end of sub - paragraph (a) and immediately before the last word in (b)

“it being understood the insurance shall provide for compensation to be payable in the types and proportions of the currencies required to rectify the loss or damage incurred.”

In sub clause 21.1(b), delete the words “or as may be specified in Part II of these Conditions”.

21.2 (a) Delete the words “from the start of Work at the Site” and substitute with the words “from the first working day after the commencement date”

(c) Add the following sub-clause: “It shall be the responsibility of the Contractor to notify the insurance company of any change in the nature and extent of the Works and to ensure the adequacy of the insurance coverage at all times during the period of the Contract”.

23.1 Third Party Insurance

Add the following at the beginning of this sub-clause:- “Prior to commencement of the Works

23.2 Minimum Amount of Insurance

Add the following at the end of this sub-clause:-
“ with no limits to the number of occurrences.”

25.1 Insert the words “as soon as practicable after the respective insurances have been taken out but in any case” before the words “Prior to the start of Work at the Site”

Add the following sub-clauses 25.5 to 25.7

25.5 Insurance Notices

Each policy of insurance effected by the Contractor for the purpose of the Contract shall include a provision to the effect that the Insurer shall have a duty to give notice in writing to the Contractor and Employer of the date when a premium becomes payable not more than thirty (30) days after the giving of such notice.

25.6 Re-insurance in Kenya

The risks against which the Contractor is obliged to insure under the Contract shall be insured through established and reputable companies approved by the Employer and located in Kenya and any cover against risks which the Contractor may enjoy shall be reinsured in Kenya by an approved Kenyan Insurance

Company In respect of the Contractor's obligations under the Contract.

It shall be the responsibility of the Contractor to notify the insurers under any of the insurances referred or event which by the terms of such insurances are required to be so notified and the Contractor shall indemnify and keep indemnified the Employer against all losses, claims, demands, proceedings, costs, charges and expenses whatsoever arising out of or in consequence of any default by the Contractor in complying with the requirements of this sub clause whether as a result of avoidance of such insurance or otherwise.

26. Compliance with Statutes, Regulations

Add the following sub-clause 26.2;-

The Employer will repay or allow to the Contractor all such sums as the Engineer shall certify to have been properly payable and paid by the Contractor in respect of such fees. Provided always that, without prejudice to sub clause, nothing contained in this clause shall be deemed to render the Employer liable to all claims which may be considered to fall within the provisions of clause 22.1.

Royalties

28.2 Add the following at the end of this sub-clause;

“The Contractor shall also be liable for all payments or compensation, if any, that are levied in connection with the dumping of part or all of any such material.”

Interference with Traffic and Adjoining Properties

29.2 Add new sub-clause 29.2;

The Contractor shall reinstate all properties whether public or private which are damaged in consequence of the construction and maintenance of the Works to a condition at least equal to that prevailing before his first entry on them.

If in the opinion of the Engineer the Contractor shall have failed to take reasonable and prompt action to discharge his obligations in the matter of reinstatement, the Engineer will inform the Contractor in writing of his opinion, in which circumstances the Employer reserves the right to employ

others to do the necessary work of reinstatement and to deduct the cost thereof from any money due or to become due to the Contractor.

The Contractor shall promptly refer to the Employer all claims, which may be considered to fall within the provisions of Clause 22.1.

LABOUR

34.2 Conditions of Employment of Labour

The Contractor shall be responsible for making all arrangements for and shall bear all costs relating to recruitment, obtaining of all necessary visas, permits or other official permission for movements of staff and labour.

34.3 Fair Wages

The Contractor shall, in respect of all persons employed anywhere by him in the execution of the Contract, observe and fulfill the following conditions:

- (a) The Contractor shall pay the rates of wages, observe hours of labour and provide conditions, housing amenities and facilities not less favorable than those required by the Regulation of wages (Building and Construction Industry) Order 1998, and any subsequent amendments thereto, or in any ministry of labour or other government department in consultation with the district whose general circumstances in the trade or industry in which the Contractor is engaged are similar. The Contractor shall at all times during the continuation of the Contract display, for the information of his employees, a notice setting out the general rates of wages, hours and conditions of labour of his employees and a copy of this clause.
- (b) In the absence of any rates for wages, hours or conditions of labour so established, the Contractor shall pay rates or wages and observe hours and conditions for labour which are not less favourable than the general circumstances in the trade or industry in which the Contractor is engaged.
- (c) Where the absence of established rates of wages, hours and conditions of labour or the dissimilarity of the general circumstances in the trade or industry in which the Contractor is engaged prevent the Contractor from observing rates of wages, hours and conditions of labour ascertained under sub-paragraph (a) or (b) above, the Contractor in fixing the rates of wages, hours and conditions of labour of his employees shall be guided by the advise of the labour department.
- (d) The Contractor shall recognize the freedom of his employees to be members of trade unions.
- (e) The Contractor shall maintain records of the times worked by, and the wages paid to his employees. The Contractor shall furnish to the

Employer, if called upon so to do, particulars of the rates of wages, hours and conditions of labour as the employer may direct.

- (f) The Contractor shall be responsible for observance by his sub-Contractors of the foregoing provisions.

34.4 Breach of Fair Wages Clause

Should a claim be made to the Employer alleging the Contractor's default in payment of fair wages to any workman employed on the Contract and if proof thereof satisfactory to the Employer is furnished by the labour department, the Employer may, failing payment by the Contractor, pay the claims out of any monies due or which may become due to the Contractor under the Contract.

34.5 Recruitment of Unskilled Labour

Any additional unskilled labour which may be required by the Contractor for the Works and which is not in his employ at the time of the acceptance of the tender shall be recruited by the Contractor from the labour office nearest to the Site of the Works.

34.6 Compensation for injury

The Contractor shall, in accordance with the Workman's Compensation Act Chapter 236 of the laws of Kenya and any other regulations in force from time to time in Kenya, pay compensation for loss or damage suffered in consequence of any accident or injury or disease resulting from his work to any workman or other person in the employment of the Contractor or any sub-contractor.

34.7 Labour Standards

- a) The Contractor shall comply with the existing local labour laws, regulations and labour standards.

- b) The Contractor shall formulate and enforce an adequate safety program with respect to all Work under this Contract, whether

performed by the Contractor or his sub-contractors. The Contractor has assurance from the Employer of cooperation where the implementation of these safety measures requires joint cooperation.

- c) Upon written request of the Employer the Contractor will remove or replace any of his employees employed under this Contract.

34.8 Recruitment

The Contractor shall not induce personnel of the employer or the Engineer to leave their regular employment and shall not, without the prior consent in writing of the Employer, employ personnel who have resigned from such service within the preceding twelve months.

35 Add the following sub-clauses 35.2 and 35.3:-

35.2 The Contractor shall maintain such records and make such reports concerning safety, health and welfare of persons and damage to property as the Engineer may from time to time prescribe.

35.3 The Contractor shall report to the Engineer details of any accident as soon as possible after its occurrence. In the case of any fatality or serious accident, the Contractor shall, in addition, notify the Engineer immediately by the quickest available means. The Contractor shall also notify the relevant authority(s) whenever such report is required by the law.

41.1 Commencement and Delays

Insert immediately after the word Works----- “on Site within 28 days” and before the word -----after

41.2 Definition of Commencement

For the purposes of this clause, the Works shall be deemed to have commenced when all of the following conditions are satisfied;

- a) The approved competent and authorized agent or representative of the Contractor is resident in the project area and is giving his whole time to the superintendence of the Works.
- b) The provision by the Contractor of evidence that all insurances required by the Contract are in force.
- c) The Contractor has an established office in the project area with postal address for receipt of correspondence.
- d) The principal items of constructional plant have been brought to Site and put to work in the execution of the permanent Works.

42.4 Possession of Site and Access Thereto

Add the following to this clause 42.4;

The Contractor shall not enter any part of the Site until he has requested and received permission to do so from the Employer or the Engineer.

The Contractor shall not use any portion of the Site for any purpose not connected with the Works.

Page

44.1 Add at the end of sub-clause 44.1 the following:

Neither rains falling between 1st November and 31st December (inclusive) and between 1st February and 31st May (inclusive) nor floods caused by such rains shall be deemed exceptional weather conditions such as may fairly entitle the Contractor to an extension of time for the completion of the Work.

45 Working Hours

Delete sub-clause 45.1 and substitute:

“subject to any provision to the contrary contained in the Contract, the Contractor shall have the option to work continuously by day and by night and on locally recognized days of rest.

If the Contractor requests for permission to work by day and night and if the Engineer shall grant such permission, the Contractor shall not be entitled to any additional payment for so doing. All such work at night shall be carried out without unreasonable noise or other disturbance and the Contractor shall indemnify the Employer from and against any liability for damages on account of noise or other disturbance created while or in carrying out night work and from and against all claims, demands, proceedings, costs, charges and expenses whatsoever in regard or in relation to such liability. In addition, the Contractor shall be required to provide, for any work carried out by night or recognized days of rest, adequate lighting and other facilities so that the Work is carried out safely and properly. In the event of the Engineer granting permission to the Contractor to work double or rotary shifts or on Sundays, the Contractor shall be required to meet any additional costs to the Employer in the administration and supervision of the Contract arising from the granting of this permission.

47.2 **Reduction of Liquidated Damages**

There shall be no reduction in the amount of liquidated damages in the event that a part or a section of the Works within the Contract is certified as completed before the

whole of the Works comprising that Contract.

No bonus for early completion of the Works shall be paid to the Contractor by the Employer.

The sum stated in the Appendix to Form of Tender as liquidated damages shall be increased by a sum equivalent to any amount payable by the Employer to the Contractor under clause 70.1 in respect of an increase in costs in such period that would not have been incurred by the Contractor if the Works had been completed by the due date for completion prescribed by clause 43.

Defects Liability

49.3 Add at the end of this sub-clause the following sentence:-

Any work ordered to be executed under this clause shall be done at a time and in a manner as directed by the Engineer so as to interfere as little as possible with the operations of the Employer or of other contractors and no extension(s) of the defects liability period will be allowed for the execution of this Work.

Add the following sub-clause 49.5 to this Clause:-

52 **Variations**

52.1 Add the following final sentence to this subclause:-

The agreement, fixing or determination of any rates or prices as aforesaid shall include any foreign currency and the proportion thereof.

52.2 **Daywork**

Add the following at the end of this sub-clause:

The Work so ordered shall immediately become part of the Works under the Contract. The Contractor shall, as soon as practicable after receiving the Daywork Order from the Engineer undertake the necessary steps for due execution of such Work. Prior to commencement of any work to be done on a Daywork basis, the Contractor shall give a notice to the Engineer stating the exact time of such commencement.

54 **Plant, Temporary Works and Materials**

Delete Sub-Clauses 54.3 to 54.4 entirely.

For the purpose of these Clauses, the term "Equipment" shall be read as "Contractor's Equipment" where the context so requires.

54.1 Line 5: - Add "written" between "the" and "consent".

Quantities

55.1 Delete sub-clause 55.1 and substitute with the following;

The quality and quantity of the Work included in the Contract Price shall be deemed to be that which is set out in the Contract Bills. The Bills, unless otherwise expressly stated therein, shall be deemed to have been prepared in accordance with the principles of the latest edition of the Civil Engineering Standard Method of Measurement.

Any error in description or in quantity or any omission of items from the Contract Bills or Specifications shall not vitiate this Contract but shall be corrected and deemed to be a variation required by the Engineer. Subject to the foregoing, any error whether arithmetical or not in the computation of

the Contract Price shall be deemed to have been accepted by the parties hereto.

The Contract Price shall not be adjusted or altered in any way whatsoever otherwise than in accordance with the express provisions of these Conditions.

55.2 Add as a new sub-clause:

“Items of Work described in the Bills of Quantities for which no rate or price has been entered in the Contract shall be considered as included in other rates and prices in the Contract and will not be paid for separately by the Employer.

Measurement

56.1 Delete sub clause 56.1 and replace with the following:-

The Contractor shall prepare and submit to the Engineer all necessary field notes and other records taken and computations made for the purpose of quantity measurements, of which the forms shall be approved by the Engineer, for the monthly progress payment under clause 60. The measurement of work quantities made by the Contractor shall be verified and certified by the Engineer based on the abovementioned documents.

The Contractor shall furnish all personnel, equipment and materials to make such surveys and computations as necessary to determine the quantities of work performed. Unless otherwise prescribed in the specifications or the drawings, all measurements for payment shall be made by the dimensions, lines and grades as shown on the drawings or by direct survey of which the methods shall be approved by the Engineer.

The documents submitted for measurement and payment shall become the property of the Employer and shall be used to the extent necessary to determine the monthly progress payment to be made to the Contractor under the Contract. Direct survey, if done, shall be subject to checking and verification by the Engineer and all errors in the said survey work and related computations as found during such checking shall be immediately corrected by the Contractor.

57.1 Delete sub clause 57.1 and substitute with the following:-

The Works shall be measured net with deductions made in accordance with the principles of the latest edition of the Civil Engineering Standard Method of Measurement. All measurements shall be given in metric (SI) units.

Provisional Sums

58.4 Prime Cost sum

Wherever an item in the Bills of Quantities has been referred to as a “P.C. Sum” (Prime Cost Sum), that item shall be construed as a Provisional sum and the provisions of Sub-clauses 58.1 to 58.3 will apply.

59.5 Add the following paragraph at the end of sub clause 59.5:-

If the Engineer desires to secure final payment to any nominated sub-contractor before final payment is due to the Contractor and if such sub-contractor has satisfactorily indemnified the Contractor against any latent defects, the Engineer may, in an interim certificate, include an amount to cover the said final payment, and thereupon the Contractor shall pay to such nominated sub-contractor the amount so certified. Upon such final payment, the amount named in the Appendix to Form of Tender as Limit of Retention Money shall be reduced by the sum which bears the same ratio to the amount as does the subcontract and sub-contractor shall be discharged from all liability for the Work, materials or goods executed or supplied by such subcontractor under the Contract to which the payment relates.

Certificates and Payment

Delete Sub-clauses 60.1 to 60.10 entirely and substitute with the following:-

60.1 Advance Payment

In the event that an advance payment is granted, the following shall apply:-

- a) On signature of the Contract, the Contractor shall at his request, and without furnishing proof of expenditure, be entitled to an advance of 10% (ten percent) of the original amount of the Contract. The advance shall not be subject to retention money.
- b) No advance payment may be made before the Contractor has submitted proof of the establishment of deposit or of a directly liable guarantee satisfactory to the Employer in the amount of the advance payment. The guarantee shall be in the same currency as the advance.
- c) Reimbursement of the advance shall be effected by deductions from monthly interim payments.
- d) Reimbursement of the lump sum advance shall be made by deductions from the Interim payments and where applicable from the balance owing to the Contractor. Reimbursement shall begin when the amount of the sums due under the Contract reaches 20% of the original amount of the Contract. It shall have been completed by the time 80% of this amount is reached.

The amount to be repaid by way of successive deductions shall be calculated by means of the formula:

$$R = \frac{A(x^1 - x^{11})}{x - 1}$$

80-20 Where:

R = the amount to be reimbursed

A = the amount of the advance which has been granted

X^1 = the amount of proposed cumulative payments as a percentage of the original amount of the Contract. This figure will exceed 20% but not exceed 80%.

X^{11} = The amount of the previous cumulative payments as a percentage of the original amount of the Contract. This figure will be below 80% but not less than 20%.

(e) with each reimbursement the counterpart of the directly liable guarantee may be reduced accordingly.

60.2 **Interim Payment Certificate**

The Contractor shall submit to the Engineer, in the manner required by the Engineer after the end of each month a statement showing the estimated total value of permanent Work properly executed and materials or goods for permanent works brought to Site up to the end of the previous month (if the value shall justify the issue of an interim certificate) together with any adjustments under clause 70 and any outstanding claims and sums the Contractor considers may be due to him. The Contractor shall amend or correct his estimate as directed by the Engineer and the latter shall not accept it until he is satisfied that it is fair and reasonable. With respect to the said materials and goods, no payment for them shall be made unless ;-

- (i) The materials are in accordance with the specifications for the Works;
- (ii) The materials have been delivered to Site and are properly stored and protected against loss, damage or deterioration;
- (iii) The Contractor's record of the requirements, orders, receipts and use of materials are kept in a form approved by the Engineer, and such records are available for inspection by the Engineer;
- (iv) The Contractor has submitted a statement of his cost of acquiring and delivering the materials and goods to the Site, together with such documents as may be required for the purpose of evidencing such cost;

- (v) The materials are to be used within a reasonable time.

The Contractor will be paid on the certificate of the Engineer the amount due to him on account of the estimated total value of the permanent Work executed up to the end of the previous month together with such amount (not exceeding 710% of the value) as the Engineer may consider proper on account of materials and goods for permanent Work delivered by the Contractor on Site and in addition, such amount as the Engineer may consider fair and reasonable for any Temporary Works for which separate amounts are provided in the Bill of Quantities, all of which shall be subject to a retention of the percentage named in the Appendix to Form of Tender until the amount retained (hereinafter and in all Contract documents called the "Retention Money") shall reach the "Limit of Retention Money" named in the said Appendix. Provided always that no interim certificate shall be issued for a sum [such sum always being the net amount thereof after all deductions for retention etc) less than that named in the Appendix to Form of Tender as "Minimum Amount of Interim Certificate" at one time.

Within 14 days after receiving a statement from the Contractor as aforesaid, and subject to the Contractor having made such further amendments and corrections as the Engineer may require, the Engineer shall issue a Certificate of Payment to the Employer showing the amount due, with a copy to the Contractor.

The Engineer shall not unreasonably withhold certifying an Interim Payment Certificate and where there is a dispute regarding an item for payment, the Engineer may delete this disputed item from the Interim Payment Certificate and certify the remainder for payment provided the said payment is in accordance with the preceding paragraph. In cases of difference in opinion as to the value of any item, the Engineer's view shall prevail.

60.3 Final Account and Final Payment Certificate

As soon as possible after the issue of Taking - Over Certificate or the termination of the Contract and not later than the time of issue of Defects Liability Certificate, the Contractor shall prepare and submit to the Engineer (with a copy to the Employer), a Statement of Final Account showing in detail the total value of work done in accordance with the Contract together with all sums paid in previous payments. Within thirty (30) after receipt of such further information as may be reasonably required from the Contractor for its verification, the Engineer shall check the said statement, prepare and submit a Final Payment Certificate to the Employer (with a copy to the Contractor).

The Final Payment Certificate shall state;

- (a) The (final) total value of all Work done in accordance with the Contract;

- (b) After giving credit to the Employer for all amounts previously paid to the Contractor, the balance, if any, due from the Employer to the Contractor or the Contractor to the Employer, as the case may be.

Unless the Contractor notifies the Engineer of his objection to the Final Payment

Certificate within twenty eight [28] days of delivery thereof , he shall be deemed to have agreed that he accepts the total Contract Price as

Page

set out in the Final Payment Certificate as full settlement for all work done under the Contract including any claims, variations and omissions thereof.

However, a Final Certificate of Payment shall not be conclusive:

- a) to the extent that fraud or dishonesty relates to or affects any matter dealt with in the Certificate, or
- b) if any arbitration or court proceedings under the Contract have been commenced by either party before the expiry of 84 days after the issue of the Final Certificate of Payment.

60.4 Payment of Certificates

Payment upon each of the Engineer's Certificates for Interim Payments shall be made by the Employer within the time stated in the Appendix to Form of Tender from the date of issue of each Certificate of Payment.

Payment upon the Engineer's Final Payment Certificate shall be made by the Employer within the time stated in the Appendix to Form of Tender from the date of issue of the Final Certificate of Payment signed by the Engineer and countersigned by the Contractor or his authorised agent or representative.

Making of a payment by the Employer shall be considered to have been duly executed on the day that the Employer has issued a cheque.

60.5 Payment of Retention Money

One half of the retention money shall become due upon the issue of a Taking - Over Certificate and shall be paid to the Contractor when the Engineer shall certify in writing that the last section of the whole of the Works has been substantially completed and the other half shall be paid to the Contractor after the expiration of the Defects Liability Period and the issue of a Certificate under Clause 62. Provided always that if such time there shall remain to be executed by the Contractor any Works ordered during such period pursuant to Clauses 49 and 50 thereof ,the Employer

shall be entitled to withhold payment [until the completion of such Works] of so much of the second half of the Retention Money as shall in the opinion of the Engineer represent the Costs of the Works so remaining to be executed. Provided further that in the event of different Defects Liability Periods having become applicable to different parts of the Works pursuant to clause 48 hereof the expression “expiration of the Defect Liability Period” shall for the purpose of this Sub-clause be deemed to mean the expiration of the latest of such periods.

60.6 Currency of Payment

The Contract price shall be stated in Kenya Shillings. All payments to the Contractor shall be made in Kenya shillings and foreign currency(s) in the proportion indicated in the tender, or agreed prior to the execution of the Contract Agreement and indicated therein. The rate[s] of exchange for the calculation of the amount of foreign currency payment[s] shall be the rate of exchange indicated in the Tender. If the Contractor indicated foreign currencies for payment other than the currencies of the countries of origin of related goods and services, the Employer reserves the right to pay the equivalent at the time of payment in the currencies of the countries of such goods and services. The Employer and the Engineer shall be notified promptly by the Contractor of any changes in the expected foreign currency requirements of the Contractor during the execution of the Works as indicated in the Statement of Foreign Currency Requirements and the foreign and local currency portions of the balance of the Contract Price shall then be amended by agreement between Employer and the Contractor in order to reflect appropriately such changes.

60.7 Overdue Payments

Unless otherwise stated in the appendix interest shall be paid on the overdue amounts and the interest to be paid shall be in accordance with prevailing commercial bank rates.

60.8 Correcting and With-holding

The Engineer may by any interim certificate or through the final account make any correction or modification to any previous certified sum and shall have authority, if any work or part thereof is not being carried out to his satisfaction, to omit or reduce the value of such work in any Interim Payment Certificate.

60.9 Completion by Sections.

If a Taking-Over Certificate shall be issued for any section or part of the Works separately, the payments herein provided for on or after issue of such a Certificate shall be made in respect of such section or part and references to the Contract Price shall mean such part of the Contract Price as shall in the absence of agreement be apportioned thereto by the Engineer.

60.10 Proportion of Foreign Currency

Subject to the provision of sub clause 60.5 the proportion of foreign currency in any amount due to the Contractor or Employer shall be determined in the following manner:-

-
- a) For all measured Work, the percentages of foreign currency for the appropriate section of the Bill of Quantities as stated in the schedule of foreign currency requirements shall be applied.
-

- b) Variations in the cost of imported materials shall be paid in foreign currency.
- c) Variations in the cost of locally purchased materials and those due to changes of legislation shall be paid in local currency.
- d) For Day works labour and plant, the respective percentages of foreign currency stated in the schedule shall be applied.
- e) For Day works materials and materials on site, payment in foreign currency will only be made for imported materials.
- f) The provisions for the deduction and release of Retention Money and the payment of interest shall be applied similarly to both the local and foreign portions.
- g) The advance mobilization loan, its repayment thereof and liquidated damages shall all be apportioned on the basis of the ration between local and foreign currency indicated in the Contract Price.
- h) In the event that the payment is for an item not covered in the foregoing paragraphs, the Engineer shall determine the proportion of foreign and local currency based on the information given in the Schedule of Foreign Currency Requirements, together with any additional information he may request the Contractor to provide.

60.11 Statement at Completion

Not later than 14 days after the issue of the Taking-Over Certificate in respect of the whole of the works, the Contractor shall submit to the Engineer a statement at completion showing in detail, in a form approved by the Engineer;

- (a) The final value of all work done in accordance with the Contract up to the date stated in such Taking-Over Certificate.
- (b) Any further sums which the Contractor considers to be due; and
- (c) An estimate of amounts, which the Contractor considers, will become due to him under the Contract.

Estimate amounts shall be shown separately in the Statement at Completion. The Contractor shall amend and correct the Statement as directed by the Engineer who shall issue a Certificate at Completion to be processed in accordance with sub-clause 60.4.

60.12 Final Statement

Not later than 56 days after the issue of the Defects Liability Certificate, the Contractor shall submit to the Engineer for consideration a draft final statement with supporting documents showing in detail, in the form approved by the Engineer;

- (a) The final value of all work done in accordance with the Contract;
- (b) Any further sums which the Contractor considers to be due to him.

If the Engineer disagrees with or cannot verify any part of the draft final statement, the Contractor shall submit such further information as the Engineer may reasonable require and shall make such changes in the draft as may be required.

60.13 Discharge

Upon submission of the Final Statement, the Contractor shall give to the Employer, with a copy to the Engineer, a written discharge confirming that the total of the Final Statement represents full and final settlement of all monies due to the Contractor arising out of or in respect of the Contract. Provided that such discharge shall become effective only after payment under the Final Payment Certificate issued pursuant to Sub-clause 60.14 has been made and the Performance Security referred to in Subclause 10.1 has been returned to the Contractor.

60.14 Final Payment Certificate

Upon acceptance of the Final Statement as given in Sub-clause 60.12, the Engineer shall prepare a Final Payment Certificate which shall be delivered to the Contractor's authorized agent or representative for his signature. The Final Payment Certificate shall state:

- (a) The final value of all work done in accordance with the Contract;
- (b) After giving credit to the Employer for all amounts previously paid by the Employer, the balance, if any, due from the Employer to the Contractor or the Contractor to the Employer as the case may be

Final Certificate shall be issued for any sum due to the Contractor even if such is less than the sum said named in the Appendix to the Form of Tender.

60.15 Cessation of Employer's Liability

Unless the Contractor notifies the Engineer of his objection to the Final Certificate within fourteen days of delivery thereof he shall be deemed to have agreed that he accepts the total Contract Price as set out in the Final

Certificate as full settlement for all work done under the Contract including any variations and omissions thereof.

62.1 **Defects Liability Certificate**

Delete the last sentence of this Sub-Clause beginning “Provided that the issue.....in Sub-Clause 60.3”.

Remedies

63.4 **Assignment of Benefit of Agreement**

Add the following at the end of this sub-clause:-

“But on the terms that a supplier or sub-contractor shall be entitled to make any reasonable objection to any further assignment thereof by the Employer and the Employer may pay the supplier or sub-contractor for any such materials supplied or Works executed under such agreement, whether the same be assigned as aforesaid or not, before or after the said determination, the amount due by such arrangement in so far as it has not already been paid by the Contractor”.

65 **Special Risks**

Add sub clause 65.9 as follows:

- (a) In the event of the Employer unilaterally ordering the final cessation of performance of the Contract for reasons not specified elsewhere in the Conditions of Contract the Contract shall be considered to be frustrated and the Contractor shall be indemnified as provided for under clause 65.1.
- (b) In the event of the Employer ordering the adjournment of the Contract before or after commencement of the Works for reasons not specified elsewhere in the Conditions of Contract, the Contractor shall be entitled to indemnity for any injury which he may have suffered as a consequence of such adjournment. The Engineer shall award the Contractor payment of such sum as in his opinion shall be reasonable giving regard to all material and relevant factors including the Contractor’s on costs and overheads, and the nature of the instruction to adjourn the Contract.

Settlement of Disputes

67.3 Arbitration

For the purposes of this Clause, the Arbitrator shall be a person to be agreed between the parties or failing agreement, the Arbitrator shall be appointed by the appointer designated in the Appendix to the Form of Tender.

Add the following paragraph after the last paragraph of sub-clause 67.3:

Arbitration shall take place in Nairobi, Kenya. The language of all arbitration proceedings shall be in English. The cost of arbitration shall be apportioned by the Arbitrator according to his findings.

Any disputes that may arise in the course of this Tender process and subsequent contract will be resolved amicably through negotiation and mediation and within the provisions of the law.

Notices

68.1 Add the following at the end of this subclause:-

Notwithstanding the foregoing, the Contractor shall either maintain an address close to the Works or appoint an agent residing close to the Works for the purpose of receiving notices to be given to the Contractor under the terms of the Contract. This obligation shall be terminated upon the issue of the Certificate of Completion.

68.2 Delete the words “nominated for that purpose in Part II of these Conditions” in this sub-clause.

Default of Employer

69.1 Default of Employer

In paragraph (a) of this Sub-Clause, delete the words “within 28 days of expiry of the time stated in Sub-clause 60.10” and insert “within 56 days after the expiry of the time stated in Sub-Clause 60.4”.

69.4 Contractor’s Entitlement to Suspend Work

Delete the first four lines of this Sub-Clause and replace with the following:-

“Without prejudice to the Contractor’s entitlement to interest under Sub-clause

60.7 and to terminate his employment under Sub-Clause 69.1, the Contractor may, if the Employer fails to pay the Contractor the amount due under any certificate of the Engineer within 56 days after the expiry of the time stated in Sub-Clause 60.4.....”

Delete sub-clause 69.4 (b) and substitute with the following----“the amount of such cost, which shall be added to the Contract Price. However, the costs due to idle time for plant, equipment and labour shall not be included in the said costs and shall be borne by the Contractor.

69.5 **Resumption of Work**

In line 3 of this Sub-Clause delete the Words “Sub-Clause 60.10” and replace with “Sub-Clause 60.7”

Changes in Cost and Legislation

70.1 Delete the sub-clause 70.1 in its entirety and substitute with the following:-

“The Contract Price shall be deemed to have been calculated in the matter set below and shall be subject to the adjustment in the event specified hereunder:

- (a) The rates contained in the priced Bill of Quantities are based upon the rates of wages and other emoluments and expenses applicable at the site and the date of tender pricing (as defined in sub-clause 70.4 hereinafter);
- (b) If the said rates of wages and other emoluments and expenses shall be increased or decreased by act, statue, decree, regulation and the like after the said date of tender pricing then the net amount of increase the emoluments and expenses shall, as the case may be, paid to or allowed by Contractor;
- (c) The rates contained in the price Bill of Quantities are based upon the rates of the Contractor’s compulsory contributions payable at the date of tender under or by virtue of any Act, Statue, Regulations and the like applicable at the site;
- (d) If any of the said rates of contribution becomes payable after that date then the net amount of new statutory contribution becomes payable after that date then the net amount of increase or decrease of the emoluments and expenses shall, as the case may be, be paid to or allowed by the Contractor. Difference between what the Contractor actually pays in respect of work people engaged upon or in connection with the works and what he would have paid in respect of such person had any of the said rates not been increased or decreased or had a new

contribution not become payable as aforesaid, shall as the case may be, be paid to or allowed by the Contractor. Provided always that the Engineer and the Contractor may agree a sum, which shall be deemed to be the net amount of the aforesaid difference, and such sum shall be deemed for the purpose of this Contract to be, that which is to be paid to or allowed by the Contractor by the virtue of this sub-paragraph;

- (e) If the market price or any materials or goods specified as aforesaid shall be increased or decreased after the said Date of Tender Pricing, then the net amount of difference between the basic price and the market price payable by the Contractor and current when any such goods and materials are bought shall, as the case may be, be paid to

or allowed by the Contractor. Orders for materials and goods listed as aforesaid shall have been placed within a reasonable time after the date at which sufficient information is available for the placing of such orders, and the placing of orders at that time shall be a condition precedent to any payments being made to the Contractor in respect of increased market prices.”

Substitute and add the following sub-clauses:

- 70.2 (a) If the Contractor shall decide subject to Clause 4 thereof to sub-let any portion of the work he shall incorporate in the sub-contract provisions to the like effect as those contained in sub-clause (1) of this Clause;
- (c) If the price payable under a sub-contract as aforesaid is increased above or decreased below the price in such sub-contract by reason of the operation of the incorporated provisions of sub-clause (1) of this clause then the net amount of such increase or decrease shall as the case may be, be paid to or allowed by the Contractor under this Contract.

70.3 The expression “the date of tender pricing” as used in this Clause means the date 28 days prior to the final date for submission of Tenders as determined by the Employer in the Tender documents.

70.4 For imported materials, the supplier’s/manufacturer’s Prime costs shall be C.I.F. cost at point of entry by the same means of transport as determined by the Contractor’s Basic Rate.

For locally produced materials, the supplier’s or manufacturer’s prime costs shall be at their nearest depot or the nearest railway station relevant to the works.

For materials, which are subject to Government Price Control, payments for price variations will be determined from the difference between the control price in force at a date 28 days prior to date for submission of Tenders and the price in force on the date of purchase.

70.5 The materials to which this Variation Clause applies are:

- ◆ All bitumen material Fuels,
- oils ◆ and lubricant Cement
- ◆ Lime
- ◆ Flex beam guardrail
- ◆ Explosives
- ◆ Gabion mesh Reinforcing
- ◆ steel

70.6 The Contractor shall not change the supplier or manufacturer during the Contract without the approval of the Engineer.

70.7 No payments will be made for price variation related to expenses incurred by the Contractor in his Head Office in Kenya, or overseas.

70.8 All payments made pursuant to Clause 70 shall be in Kenya Shillings.

70.9 No payments will be made for the cost of preparing V.O.P. claims.

70.10 Add the following at the end of this clause.

“Notwithstanding the foregoing, such additional or reduced cost shall not be separately paid or credited as aforesaid if the same shall already have been taken into account in accordance with the provisions of sub-clause 70.1”.

ADDITIONAL CLAUSES

Clause 73 Declaration Against Waiver

The condoning by the Employer of any breach or breaches by the Contractor or any authorized sub-contractor of any of the stipulations and Conditions contained in the Contract shall in no way prejudice or affect or be construed as a waiver of the Employer’s rights, powers and remedies under the Contract in respect of any breach or breaches as aforesaid.

Clause 74 Bribery and Collusion

The Employer shall be entitled to determine the Contract and recover from the Contractor the amount of any loss resulting from such determination if the Contractor shall have offered or given or agreed to give any person any gift or consideration of any kind as an inducement of regard for doing or fore bearing to do or for having done or fore borne to do any action in relation to obtaining or the execution of the Contract or any other contract with the Employer or if any of the like acts shall have been done by any person employed by the Contractor or acting on his behalf (whether with or without the

knowledge of the Contractor) or if the Contractor shall have come to any agreement with another contractor or number of contractors whereby an agreed quotation or estimate shall be tendered to the Employer by one or more contractors.

Clause 75 Contract Confidential

The Contractor shall treat the Contract and everything in connection therewith as private and confidential. In particular, the Contractor shall not publish any information, drawings or photographs concerning the Works in any trade or technical paper etc, and shall not use the Site for the purpose of

advertising except with the written consent of the Engineer and subject to such conditions as the Engineer may prescribe.

Clause 76 Employer's Officials etc., Not Personally Liable

No official of the Employer or the Engineer or the Engineer's Representative or anyone of their respective staffs or their employees shall be in any way personally bound or liable for the acts or obligations of the Employer under the Contract or answerable for default or omission in the observance or performance of any of the acts, matters or things which are herein contained.

Clause 77 Taxes and Duties

- (1) The Contractor shall list in his tender the plant and vehicles which he intends to import for the execution of the Works. The Engineer will consider the list in the context of the program of the Works and will give his approval subject to any modifications that he may see fit to make. No appeal against the Engineer's decision shall be permitted.

The Contractor will be permitted to import approved plant and vehicles required for the execution of the Works on the basis of temporary admission into Kenya and re-export thereafter upon completion of the Contract without payment of customs duties and Value Added Tax for them. If the plant and equipment shall not be re-exported, duties and taxes shall then be paid based upon their residual value at the date of completion of the Contract, or the date of withdrawal from the Works, if earlier. Plant and vehicles so imported shall not be utilized on other works not associated with the Contract unless specifically authorized by the Engineer.

- (2) The Contractor will be permitted to import approved spare parts, tires and tubes without payment of customs duty and Value Added Tax for maintenance of any imported vehicles and plant as provided in subclause 77.1 above, within a financial limit indicated by himself. However, this limit will not exceed 110% of the Contract Price excluding Contingencies.
- (3) All materials approved by the Engineer to be incorporated into the Works or temporary works, and whose importation into Kenya is agreed to be essential shall be free of customs duties and Value Added Tax. The Contractor shall submit a list of such materials required with the tender. The Contractor shall be required to satisfy the Engineer that

such materials have actually been incorporated into the Works.

Items produced in Kenya will not be permitted to be imported without payment of customs duty and Value Added Tax.

Items produced in Kenya shall mean commercially recognized goods or products that are either mined, grown, manufactured, processed or assembled (whether the components are imported or not) in Kenya.

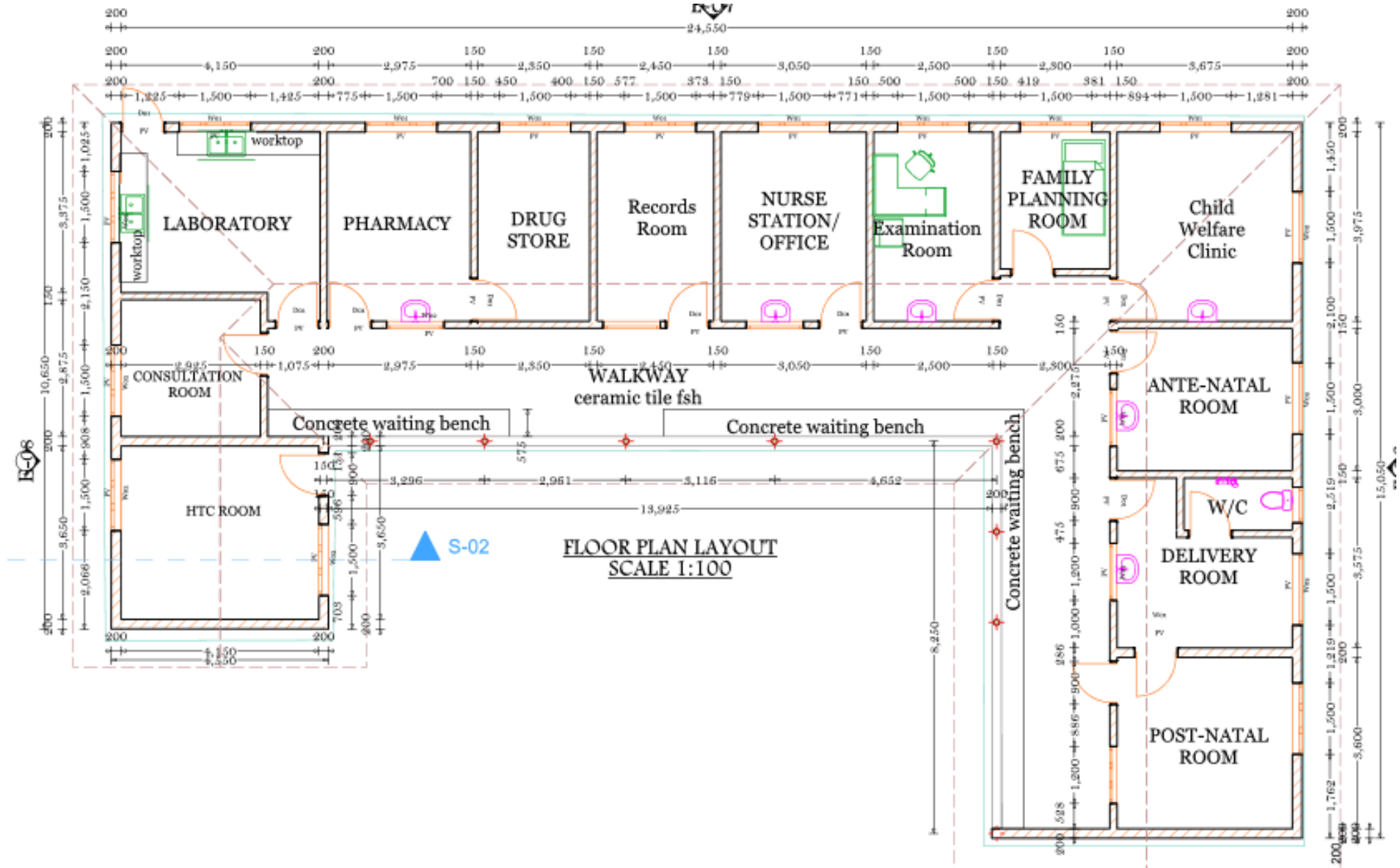
Clause 78 Joint Ventures

78.1 If the Contractor is a joint venture, all partners of the joint venture shall be jointly and severally liable to the Employer for the execution of the entire Contract in accordance with its terms and Conditions.

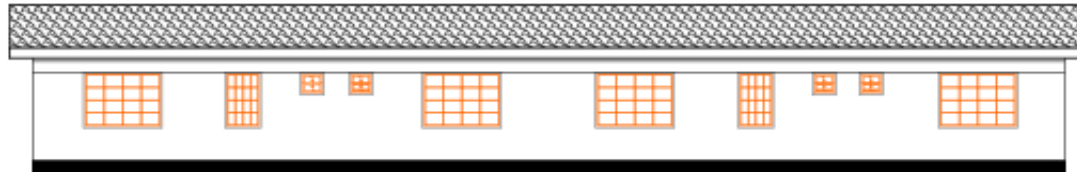
SECTION IV - DRAWINGS

ARCHITECTURAL DESIGNS

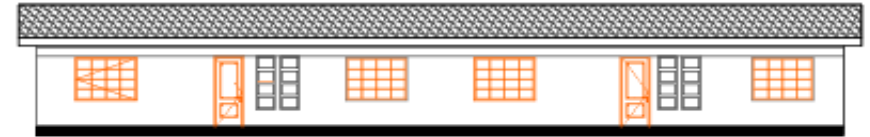
1. DISPENSARY BLOCK



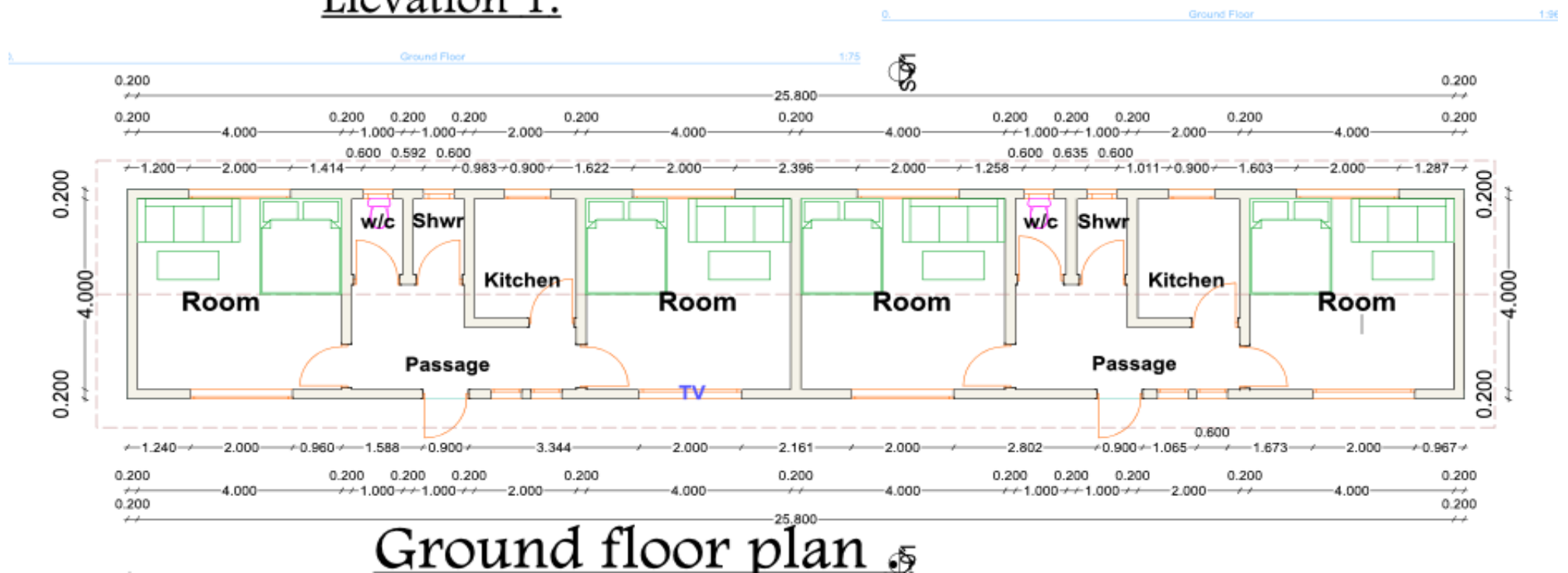
2. STAFF HOUSE



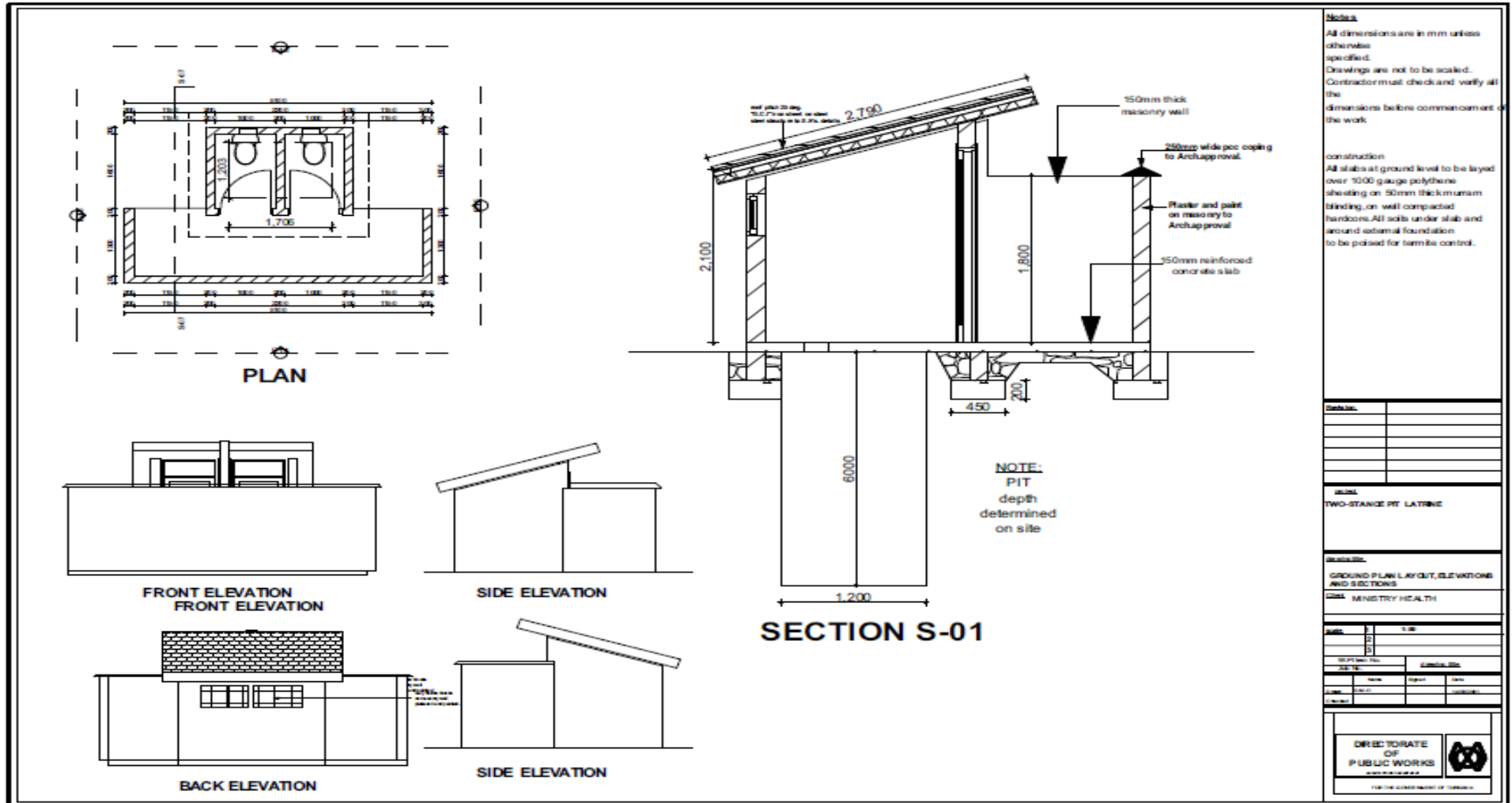
Elevation 1.



Elevation 2.



3. TWO DOOR PIT LATRINE



SECTION V - BILLS OF QUANTITIES

(a) Preambles

1. The method of measurement of completed work for payment shall be in accordance with *[insert the name of a standard reference guide, or full details of the methods to be used]*.
2. The Site is situated in *(provide full description where the site is situated, coordinates from the nearest known landmark like a town and its size)* It is approximately _____ Kilometers from Nairobi. Access to the site shall be through _____, Which is an existing public road. Any damage caused to the surfaces of this road shall be made good at the Contractor's expense. The Contractor shall visit the site and acquaint itself with its nature and position, the nature of the ground, substrata and other local conditions, positions of existing power, water and other services, access roads or any other limitations that might affect his cost or progress. No claim for extras shall be considered on account of lack of knowledge in this respect.
3. The Contractor shall obtain the Architect's approval on the siting of all temporary buildings, spoil heaps, temporary access path, and storage of materials. The Contractor shall also obtain the Architect approval and direction regarding the use of any materials found on the Site.
4. The drawings used in the preparation of these Bills of Quantities can be inspected at the offices of the Procuring Entity or Procuring Entity's Representative during normal working hours. Two sets of the Working Drawings shall be provided to the contractor but additional copies shall be provided at a cost to be determined by the Engineer.
5. The Contractor shall allow for the payment of all bank charges in connection with the procurement of Bank Guarantees and stamp charges in connection with this contract Agreement.
6. The Contractor shall carry out the various sections of the Works in such an order as the Architect May direct. The Procuring Entity reserves the right to occupy the Works by sections on completion provided that such occupation is considered to be both practical and reasonable and will not interfere with the Works. The Contractor shall allow any costs associated with such occupation.
7. The main Contractor will be fully responsible for paying his Sub-Contractor but the Procuring Entity reserves the right in very exceptional circumstances to make such payments direct in the interests of the project where the completion thereof might be jeopardized by any dispute or vicariousness between the Contractor and the Sub-Contractor involve.
8. The Contractor shall complete and deliver the Works in the period inserted in the Form of Tender as his time for completion of the Works from the date for Possession, to be agreed with the Engineer. The Contract Period is presumed to have been calculated making due allowance for seasonal inclement weather conditions. No claim for extension of time due to the normal in clement weather for this area shall be entertained.
9. The Contractor shall, upon receiving instructions to proceed with the Works, draw up a Programme and Progress Chart setting out the order in which the Works are to be carried out, with the appropriate dates there of. This Chart shall be agreed with the Architect and no deviation from the order set out in it will be permitted without the written consent of the Engineer. The Contractor will be responsible for arranging the above programme with all his sub-Contractors and Specialties. The Contractor shall allow in his rates for carrying out this exercise, and for updating it as required.
10. The Contractor shall submit to the Architect on the first day of each week or such longer period as the Architect from time to time direct, a Progress Report and any information for the proceeding period, showing the progress during the period and the up-to-date cumulative progress on all important items of each section or portion of the Works.
11. The Contractor shall arrange for photographs of the Site to be taken by a professional photographer approved by the Engineer. The Photographs shall provide a record of the Site

and adjacent are as prior to the commencement of the Works and shall cover such portion of the works in progress and completion as the Architect shall direct. All prints shall be full plate size, unmounted, and marked on the reverse side with the date of exposure, identification reference and brief description. The copyright of all photographs shall be vested in the Procuring Entity. The negatives and four prints from each negative shall be delivered to the Architect within two weeks of exposure.

12. Figured dimensions are to be followed in preference to dimensions scaled from the Drawings, but whenever possible dimensions are to be taken on the Site or from the buildings. Before any work is commenced by Sub- Contractors or Specialist Firms, dimensions must be checked on the site comparable dimensions shown on the drawings. The Contractor shall be responsible for the accuracy of such dimensions.
13. Prior to commencement of any work the Contractor is to ascertain from the relevant Authorities the exact position, depth and level of all existing electric cables, waterpipes or other services in the are and he shall make whatever provisions may be required by the Authorities concerned for the support and protection of such services. Any damage or disturbance caused to any services shall be reported immediately to the Architect and the relevant Authority and shall be made good to their satisfaction at the Contractor's expense. Where appropriate the Contractor shall open up the ground in advance of the main work by hand digging if necessary, to locate precisely the position and details of the services which are likely to affect his operations.
14. The Contractor shall include in his prices for the transport of materials, workmen, etc./, to and from the site of the proposed works, at such hours and by such route as are permitted by the Authorities.
15. The Contractor will be required to make good, at his own expense and damage he may cause to the present road surface and pavements within or beyond the boundary of the Site, during the period of the works. All existing paths, storm water channels, etc., that may be destroyed or damaged during the progress of the Works shall be reinstated by the Contractor to the satisfaction of the Engineer.
16. The Contractor is to allow for complying with all instructions and regulations of the Police Authorities.
17. All water shall be fresh, clean and pure, free from earthly, vegetable or organic matter, acid or alkaline substance in solution. The Contractor shall provide at his own risk and cost all water for use in connection with the Works, (including works of sub-contractors). If need be, he shall make arrangements with the Local Water Authority for the installation of a separate meter for all water used by him throughout the Contract and pay all cost and fees in connection therewith. He shall also provide temporary storage tanks and tubing, etc., as may be necessary, and clear away at completion.
18. The Contractor shall provide all artificial lighting and power for his own use on the Works, (including Sub – Contractor's) including all temporary connections, wiring, fittings, etc., and clearing away on completion. The Contractor shall pay all fees and obtain all permits in connection there with.
19. The Contractor shall constantly keep on the Works a Literate English-speaking Agent or Representative, competent and experienced in the kind of work involved, who shall give his whole time to the superintendence of the works. (Including works of sub – contractors). Such Agent or Representative shall receive on behalf of the Contractor directions and instruction from the Engineer, and such directions and instructions shall be deemed to be given to the contractor in accordance with the Conditions of Contract. The Agent shall not be replaced without the specific approval of the Engineer.
20. The Contractor shall ensure that the safety of his work people and all authorized visitors to the site are protected at all times. In particular, there shall be the proper provision of guard-rails to scaffolding, protection against falling materials, tools on site, dust, nail and

other sharp objects. The site shall be kept tidy and clear of dangerous rubbish. The Architect shall be empowered to suspend work on site should it be considered this condition is not being observed and no claim arising from such suspension will be allowed.

21. The areas as available to the Contractor for work yards, offices and other facilities shall be directed by the Architect and any existing features to remain shall be protected from damage throughout the Contract Period and handed back in good condition when they are vacated at the end of the Contract. If additional areas are required, the contractor shall source the town cost.
22. The Contractor shall give the Architect reasonable notice of the intention to set out or take levels for any part of the Works so that arrangements may be made for checking the work. The accuracy of setting out and leveling shall be within the tolerances specified in the Specifications or on the Drawings. The checking of setting out or leveling by the Architect shall not relieve the Contractor of his duties or responsibilities under the Contract.
23. The Contractor must take steps necessary to safe guard and shall be held fully responsible for any damage caused to existing and adjacent property, including buildings that are not a subject of demolition. He shall make good at his own cost damage to persons and property caused there on, and he shall indemnify the Procuring Entity against any loss or claim that may arise.
24. The Contractor shall take such steps and exercise such care and diligence as to minimize nuisance arising from dust, noise or any other cause to the occupiers of the existing and adjacent property. He must provide such temporary and special screens and tarpaulins or gummy bags, hoarding, barriers, warning signs etc. as he considers necessary and sufficient for the protection of the existing and adjacent property and or prevention of nuisance etc. as directed by Engineer.
25. The Contractor's attention is drawn to the standards levy order which was amended on 15th October 1998. Legal notice No.154 of 1998. The Contractor is required to pay a monthly level of 0.2% of his factory price of construction works with effect from January 1999. Tenderer shall allow for this in the build-up of his rates.
26. The Contractor shall provide temporary sheds, offices, messrooms, sanitary, accommodation and other temporary buildings for the use of the contractor and sub-contractors, including lighting furniture equipment and attendance.
27. Contractor shall provide/build labor camp sites to be agreed with the Engineer. Labor camps shall be complete with sanitary accommodation and fencing gates.
28. The Contractor must provide the necessary toilet facilities to the requirement and satisfaction of the Health Authorities and maintain the same in a thoroughly clean and sanitary condition and pay all conservancy fees during the period of the Works and remove when no longer required.
29. The Contractor shall provide at his own risk and cost all watching and lighting as necessary to safeguard the Works, Plant and materials against damage and theft.
30. The Contractor shall provide all necessary hoists, tackle, plant, equipment, vehicles, tools and appliances of every description for the due and satisfactory completion of the Works and shall remove the same on completion. All such plant, tools and equipment shall comply with all regulations in force throughout the period of the Contract and shall be altered or adopted during the Contract period as may be necessary to comply with any amendments in or additions to such regulations.
31. Provide, erect and maintain all necessary scaffolding, sufficiently strong and efficient for the due performance of the works, including Sub-Contract Works, provide special scaffolding as required by Sub-Contractors, alter and adopt all scaffolding as and when required during the Works, and remove on completion. No scaffolding is measured here in after and the

Contractor must allow in his rates for this.

32. The Contractor shall take all necessary precautions such as temporary fencing, hoarding fans, planked footways, guard-rails gantries screen, etc., for the safe custody of the Works, materials and public protection and adjacent properties.
33. Cover up all and protect from damage, including damage from inclement weather, all finished work and unfixed materials, including that of Sub-Contractors, etc., to the satisfaction of the Architect until the completion of the Contract.
34. The Contractor shall, after completion of the works, at his own expense, remove and clear away all surplus excavated demolition materials, plant, rubbish and unused materials and shall leave the whole of the Site and Works in a clean and tidy state to the satisfaction of the Engineer, sheds, camps, etc. Particular care shall be taken to leave clean all floors and windows and to remove all paint and cement all rubbish and dirt as it accumulates. The Contractor is to find his own dump and shall pay all charges in connection therewith.
35. Concrete test cubes shall be prepared in a set of three, as described including testing fees, labor and materials, making molds, transport, handling, etc. Allow in your rates for making at least four cubes on each occasion, from different batches; the concrete being taken from the point of deposit.
36. The Contractor shall furnish at the earliest possible opportunity before work commences, and at his own cost, any samples of materials and workmanship that may be called for by the Architect for the approval or rejection, and any further samples in the case of rejection, until such samples are approved by the Engineer. Such samples, when approved, shall be the minimum standard for the work to which they apply. The procedure for submitting samples of materials for testing or approval and the method of marking for identification shall be as laid down by the Engineer. The Contractor shall allow in his Tender for such samples and tests, including those in connection with his Sub-Contractors work.
37. The Contractor's attention is drawn to the Finance Bill of the year 2000/2001 on withholding tax on contractual payment section 35(7)(i)(ii) which became effective on 1st July 2000. A 3% withholding tax will be applicable to all interim payments exceeding Kshs..... for work done in respect of building or civil works. The contractor shall allow for any costs arising resulting therefrom in the build-up of rates.
38. Blasting will only be allowed with the express permission of the Architect in writing. All blasting operations shall be carried out at the Contractor's sole risk and cost, in accordance with any Government regulations in force for the time being, and any special regulations laid down by the Architect governing the use and storage of explosives.
39. The National Construction Authority is a state corporation established under the national construction authority Act No.14 of 2011. The broad Mandate of the Authority is to oversee the construction industry and coordinate its development. The National Construction Authority Regulations 2014 with an effective date of 6th June 2014, regulation 25, - Allow 0.10% of the tender sum/contract sum for construction levy.
40. The Contractor's attention is drawn to Finance Bill of 1993 where VAT was introduced in all contracts for construction services. The tenderer is also drawn to VAT Act Cap 476 clause 19(9). The tenderer must allow for VAT 1.19 as instructed elsewhere.
41. The contractor shall allow and pay for all insurance to cover risks and indemnities required Items 17 and 18 of the Conditions of contract and also specified in the Special Conditions of Contract.

BILL NO. 2: WORK ITEMS

(organized appropriately into work sections, such as foundations, walls/structure, finishes, doors and windows, mechanical installations. etc.

Bill No 2 - *(Name of Section for instance; Foundations).*

1. DISPENSARY BLOCK

Item No.	Description	Unit	Quantity	Rate	Kshs.
	<u>Element No. 1</u>				
	<u>Substructures (All Provisional)</u>				
	<u>Site Preparation</u>				
A.	Clear site of grass and shrubs preserve trees on site and burn up arisings	SM	355		
B.	Excavate for making level on sandy soil,load,transport and spread on site as directed by the Engineer	CM	71		
C.	Excavate earth for strip foundation and compress the bottom surface (8MPa) according to the tectnical regulations for the activity.Load,transport and spread on site as directed bt the Engineer in price are includes also compressing.(Remark:All expenses for testing of compressing need to be included in price	CM	142		
D.	Ditto for for column and column bases	CM	1		
E.	Extra cover excavations for rock(All classes)	CM	2		
F.	Return fill and ram selected materials,where the selected materials are not suitable,the contractor will use imported and approved imported materials	CM	95		
G.	Selected imported backfill well watered and compacted in layers not exceeding 150mm thick to Engineer's approval	CM	36		
H.	Cart away surplus materials arising from excavation as directed on site	CM	33		
I.	Allow for keeping all excavations free from spring,subterranean or flood water	Item	1		
J.	Allow for necessary planking and strutting sides of all types of excavations	Item	1		
	Total carried to collection page 1 of 13				-

Item No.	Description	Unit	Quantity	Rate	Kshs.
	<u>SUBSTRUCTURES WORKS-CONT'D</u>				
	<u>Hardcore backfill</u>				
A.	Supply,transport,deliver and handpack gravel 300mm thick below foundation slab,this includes watering and compressing gravel according to standards for this activity	CM	72		-
B.	50mm thick quarry dust blinding to hardcore (measured separately)	SM	240		-
C.	"Premise 200CC" insecticide treatment to surfaces of excavatios applied as per manufacturer's instruction with a 10 year guarantee as "HIGHCHEM LTD"	SM	240		-
	<u>Damp proof membrane</u>				
D.	Two layers 1000 gauge polythene sheeting with minimum 300mm side end laps	SM	240		-
	<u>Concrete class 1:3:6 (40mm aggregate</u>				
D.	50mm thick blinding foundation in trenches	SM	96		-
E.	Ditto to column bases	SM	2		-
	<u>Supply and put in place vibrated reinforced concrete class 25(20mm aggregate) in:-</u>				
F.	Strip footing	CM	19.2		-
G.	0.45 X 0.45 X.75 Column bases	CM	1		-
H.	150mm thick ground floor slab	SM	240		-
	Total carried to collection page 2 of 13				-

Item No.	Description	Unit	Quantity	Rate	Kshs.
	<u>Supply and construct formwork to the sides of concrete surfaces.The formwork shall comprise acceptable timber or steel shutters with and including mould oil,putting in place and striking off.Where the surface of concrete is disturbed by striking off,it shall be repaired at the contractor's cost</u>				
A	Formwork to sides of strip foundation	SM	60		-
B	Formwork to sides of column bases	SM	8		-
D	Formwork to sides of ground floor slab 150mm wide	LM	200		-
	<u>Supply,transport,deliver,cutting,bending and install steel rods.</u>				
	<u>High tensile square twisted reinforcement bars to B.S. 4461 including bends,hooks,tying wire,distance blocks,chairs and spacers.</u>				
E	Assorted reinforcement bars 10 mm diameter	Kgs	288		-
F	Assorted reinforcement bars 12mm diameter	Kgs	576		-
	<u>Supply,transport and install mesh fabric reinforcement</u>				
G	Fabric mesh reinforcement BRC type A142 weighing 2.22kg/m ² with minimum 300mm side and end laps.	SM	240		-
	<u>Construction of natural stonework walling;roughly squared;bedded and jointed in 1:4 cement and sand mortar and reinforced with 20 gauge hoop iron wall ties every alternate course.The stone crushing strength to be minimum 7N/mm²</u>				
H	20mm thick	SM	174		-
	paving slabs; Excavatecompact ground and lay 600x500x50mm thick precast concrete paving slabs on murram bed including jointing and pointing in cement sand and mortar mix (1:4)	SM	60		-
Total carried to collection page 3 of 13					-

Item No.	Description	Unit	Quantity	Rate	Kshs.
	<p>WALLING</p> <p><u>The quantity is calculated as gross,including the edges,the necessary corners.The openings will be deducted where the walls will be filled with other materials other than masonry and blockwork</u></p>				
	<p>Supply,transport,deliver selected quality concrete blocks for walling.The wall will be bedded and jointed in 1:4 cement and sand mortar and reinforced with 20 gauge hoop iron every alternate course.The concrete blocks should have a minimum crushing strength of 7N/mm2</p>				
A	200mm thick	SM	430		-
	<p>Total carried to Summary page 5 Of 13</p>				

Item No.	Description	Unit	Quantity	Rate	Kshs.
	CONCRETE WORKS				
	<u>Supply and put in place vibrated reinforced concrete class 25(20mm aggregate)in:-</u>				
A	Ring beams and other structural beams concrete surfaces. <u>The formwork shall comprise acceptable timber or steel shutters with and including mould oil,putting in place and striking off.Where the surface of concrete is disturbed by</u>	CM	10		-
B	Formwork to sides and soffits of ring beam and other beams	SM	105		-
	<u>Supply,transport,cutting,bending and installing of steel rods</u>				
	<u>High tensile square twisted reinforcement bars to B.S. 4461 including bends,hooks,tying wire,distance blocks,chairs and spacers</u>				
C	Assorted reinforcement bars 8mm diameter	Kgs	347		-
D	Assorted reinforcement bars 12mm diameter	Kgs	560		-
	<u>Carried to correction</u>				-
	Brought forward from page 5				-
	Brought down from above				-
	Total Carried to summary 6 of 13				-

Item No.	Description	Unit	Quantity	Rate	Kshs.
	<u>ROOFING</u>				
	All timber to be well seasoned 2nd grade timer pressure impregnate with approved preservative. The contractor to allow in his rates for proper joints and connections including scarfed joints and connections including scarfed joints and hoop iron as may deem necessary;				
	<u>Structural Timber;Sawn or Equal and approved</u>				
A	150 x 50mm Rafters	LM	221		
B	Ditto tie beams	LM	180		
C	150x100mm Kingpost	LM	65		
D	150 x 50mm struts and ties	LM	280		
E	100x50mm Ditto purlins	LM	179		
F	100 x 50mm Wall plates plugged/bolted [bolts and holes measured separately]	LM	90		
	<u>Roof covering</u>				
	<u>Supply,transport and install G.C.I roof sheets as supplied by Metro-tile Ltd.The roofing sheets to be installed using the strict manufacturer's specifications and with including all necessary bolts ,nuts and other affixtures.Where raking and curved cutting will be required,the contractor will do them at his own cost.</u>				
G.	Roof covering sloping at 25 degrees with and including necessary fixings installed as directed by the Engineer	SM	292		
H.	25mm thick x300mm wide cypress fascia board firmly fixed to timber trusses and purlins	LM	100		
I.	Supply,transport,prepare and apply gloss paint to plastered general surfaces.The paint shall comply with the specifications supplied alongside with these Bills of Quantities				
J.	The contractor shall apply undercoat,skimming and two finishing coats of gloss paint.The engineer shall select the colour shade and code of paint				
K.	Gloss paint to wooden surfaces	SM	15		
	Total carried to summary page 7 of 13				-

Item	Description	Unit	Quantity	Rate	kshs
	<u>FINISHES</u>				
	<u>EXTERNAL WALL FINISHES</u>				
	<u>The contractor shall provide all necessary and strong scaffolding to enable workers access the top of the walling while carrying out finishing works</u>				
	<u>Gauged render comprising of lime,cement and sand (1:2:9) respectively.The contractor shall hack the surface of concrete/masonry where necessary in order to provide a surface where the render/plaster will hold strongly and permanently</u>				
	Supply,mix and apply render of average thickness of 200mm to masonry Or concrete surfaces	SM	292		-
	<u>Supply,transport,prepare and apply 'Rock Tuff' or any other approved textured paint to metal general surfaces</u>				
	Silk vinyl emulsion paint to plastered surfaces	sm	292		-
	<u>INTERNAL WALL FINISHES</u>				
	<u>The contractor shall provide all necessary and strong scaffolding to enable workers access the top part of the walling while carrying out finishing works</u>				
	<u>Gauged plaster comprising of lime,cement and sand (1:2:4) respectively.The plaster shall have a neat vertical finish.The contractor shall hack the surface of the concrete/masonry where necessary in order to provide a surface where the render/plaster will hold strongly and permanently</u>				
A	Supply,mix and apply plaster of average thickness of 15mm to masonry or concrete surfaces	SM	600		-
B	Silk vinyl emulsion paint to plastered surfaces	sm	600		-
	Total carried to collection page 10 of 13				-

Item	DESCRIPTION	UNIT	QTY	RATE	AMOUNT[KSHS]
	<u>FLOOR FINISHES</u>				
	<u>25mm thick coloured cement sand (1:4) screed as described in:-</u>				
A	25mm Thick cement and sand (1:4) screed to receive ceramic floor tiles	SM	240		-
	600x300x8 mm thick floor "saj" or equal and approved ceramic floor tiles jointed and pointed with matching white cement:				
B	Tiling	SM	240		-
C	Ditto 100mm high skirting	LM	290		-
	<u>CEILING FINISHES</u>				
	<u>Plaster; 9 mm thick first coat of cement, lime and sand (1:2:9); 4 mm second coat of cement, lime putty and sand (1:1:6); steel trowelled smooth.</u>				
	<u>Sawn Cypress</u>				
A	50 x 50 mm Branderling	196	LM		-
B	75 x 50 mm Branderling	202	LM		-
	<u>12 mm thick gypsum board lining to ceiling on and including all necessary accessories and in accordance with the manufacturer's instructions</u>				
C	Chip board ceiling	240	SM		-
	<u>Moulded Gypsum cornices</u>				
D	100 x 20 mm decorative polystyrene cornice	82	LM		-
	<u>T&G wrot cypress Ceiling to eaves</u>				
E	Tounged and grooved eaves boarding and with and including plastic vents along eaves at 2000 mm centres	35	SM		-
F	Cornice to match	59	LM		-
	Subtotal				-
	Brought forward from page 10				-
	Brought down from above				-
	Carried to Grand Summary page			Kshs.	

ITEM	DESCRIPTION	UNIT	QTY	RATE	AMOUNT (KSHS)
1	SUBSTRUCTURES				-
2	WALLING				-
3	ROOFING				-
4	DOORS				-
5	WINDOWS				
6	FINISHES				
	TOTAL CARRIED TO SUMMARY				

2. STAFF HOUSES

ITEM	DESCRIPTION	QTY	UNIT	RATE	AMOUNT
BILL. NO 2	<u>PROPOSED CONSTRUCTION OF STAFF HOUSES</u>				
	ELEMENT NO. 1 ~ SUBSTRUCTURES				
	<u>All Provisional</u> <i>The quantities and nature of work indicated are provisional. The actual work done shall be ascertained, valued and adjustments made accordingly.</i>				
	<u>Excavation and earthworks</u>				
A	Clear the site of all bushes shrubs small trees and burn the arising spoil	84	Sm		-
B	Excavate to remove top vegetable soil not exceeding 1.5metres deep (average 200mm deep) from ground level	30	Sm		-
C	Excavate to reduce levels not exceeding 1.5 metres for foundation trenches	45	Cm		-
D	Ditto: column bases	2	Cm		-
	<u>Disposal of excavated material</u>				
E	Cart away surplus excavated material	23	Cm		-
F	Return, fill and rum selected excavated material around foundations	23	Cm		-
	<u>Disposal of water</u>				
G	Allow for keeping foundations free from water, mud, fallen materials.	1	Item		-
	<u>Planking and strutting</u>				
H	Allow for planking and strutting to sides of all excavations and keeping the same free from fallen materials	1	Item		-
	<i>Carried to collection</i>				

ITEM	DESCRIPTION	QTY	UNIT	RATE	AMOUNT
	<u>Imported Filling</u>				
A	450mm Thick well rammed and consolidated under floors to the approval of the Engineer	52	Sm		
B	50mm Thick murrum blinding	52	Sm		
	<u>Anti-termite treatment</u>				
C	Chemical anti-termite treatment as 'Premise SC 200' or equal and approved, executed complete by an approved specialist under a ten(10) year guarantee to surfaces of hardcore	52	Sm		
	<u>Damp proof membrane</u>				
D	1000 gauge polythene or other equal and approved damp proof membrane laid under surface bed; 300mm side and end laps	52	Sm		
	<u>Concrete Work</u>				
	<u>Plain concrete class 15(mix 1:4:8)</u>				
E	50 mm Thick blinding under column bases	1	Sm		
F	Ditto but to strip footing	30	Sm		
	<u>In situ concrete class 25/20, vibrated and reinforced as described, in:-</u>				
G	Strip footing	6	Cm		
K	100mm thick ground floor slab	52	Sm		
	<u>Reinforcement [All Provisional]</u>				
	<u>High tensile steel reinforcement to B.S 4449 and 4466 to strip footing, column bases and stub columns</u>				
L	Assorted Bars[D10 and D12]	98	Kg		
M	Mesh reinforcement ref A142 weighing 2.22 kg per sq. metre in concrete ground floor slab including all necessary tying and support (No allowance for laps)	52	Sm		
	<i>Carried to collection</i>				

ITEM	DESCRIPTION	QTY	UNIT	RATE	AMOUNT
	<u>Sawn formwork as described to:</u>				
A	Sides of strip footing	20	Sm		
D	Edges of ground floor slab over 75mm but not exceeding 125mm high	8	Sm		
	<u>Walling</u> <i><u>Natural quarry stone wall, load bearing 7.0N/mm², bedded and jointed in cement and sand 1:4 mortar in:</u></i>				
E	200mm Thick foundation walling	100	Sm		
	<u>Plinths</u>				
F	15mm Thick cement/sand (1:4) render to plinths	30	Sm		
G	Approved bituminous paint to rendered surfaces	30	Sm		
	<i>Carried to collection</i>				
	From page 1				
	From page 2				
	From page 3 above				
	TOTAL FOR ELEMENT NO. 1 ~ SUBSTRUCTURES Carried to Summary				

ITEM	DESCRIPTION	QTY	UNIT	RATE	AMOUNT
	ELEMENT NO. 3- WALLING				
	<u>Waterproofing- DPC</u> <i><u>Bituminous felt damp proof courses</u></i> <i><u>laid on and including leveling screed</u></i> <i><u>of cement mortar</u></i>				
A	In walling, width 200mm	50	Lm		
	<u>External Walls</u> <i><u>Chisel dresses natural stone walling</u></i> <i><u>bedded and jointed in cement/sand</u></i> <i><u>(1:4) mortar; raking where necessary</u></i>				
B	200mm Thick walling	105	Sm		
C					
	<i>Vent Blocks</i>				
D	200mm thick precast vent block bedded and jointed in cement and sand (1:3) mortar	10	No.		-
	TOTAL FOR ELEMENT NO.3- WALLING Carried to Summary				

ITEM	DESCRIPTION	QTY	UNIT	RATE	AMOUNT
	<p>ELEMENT NO. 4~ ROOF CONSTRUCTION AND COVERING [ALL PROVISIONAL]</p> <p><u>STEEL STRUCTURE</u></p> <p>All timber to be well seasoned 2nd grade timer pressure impregnate with approved preservative. The contractor to allow in his rates for proper joints and connections including scarfed joints and connections including scarfed joints and hoop iron as may deem necessary;</p>				
A	50X150MM Rafters	54	Lm		
B	50x100mm Ties and struts	43	Lm		
C	75x50mm Purlins	108	Lm		
D	50x150mm Tie beam	36	Lm		
F	200x25mm Fascial board	33	Lm		
G	100X150mm king post	9	Lm		
H	100X150mm wall plate	33	Lm		
	<p><u>ROOF COVERING</u></p> <p><i>Supply and fix the following:</i></p>				
G	Supply and fix prepainted Gauge 28 IT5. roofing sheets fixed to steel purlins (Measured separately)with approved bolts. The rate to include fixing bolts.	137	Sm		
H	Matching ridge cap	15	Lm		
	<p>TOTAL FOR ELEMENT NO.4 ~ ROOFING</p> <p>Carried to Summary</p>				

ITEM	DESCRIPTION	QTY	UNIT	RATE	AMOUNT
	ELEMENT NO. 5- DOORS				
1	<p><u>Steel Casement Doors</u> <u>Mild steel casement door made out of cold rolled steel sections thoroughly cleaned and phosphatized to resist corrosion before receiving Two coats of grey rust inhibiting primer</u> <u>Door shutter made out of 2mm thick mild thick steel plate at the bottom up to a height of 300mm welded to 40x40x3mm thick mild steel SHS frame; with fixed mild steel louvers as per the details; 300mm high fanlight mild steel louvers ; 50x50x5mm thick mild steel SHS external frame grouted in concrete/walls as per the details:Complete with all iron mongery (butt hinges, handles, catches e.t.c) and lugs fixed to manufacturer's specifications (See details provided)</u></p>				
A	Single leaf door size 900x2400mm high	6	NO		
	<p>TOTAL FOR ELEMENT NO. 5 - DOORS Carried to Summary</p>				

ITEM	DESCRIPTION	QTY	UNIT	RATE	AMOUNT
	ELEMENT NO. 6- WINDOWS				
	<u>Steel Casement Windows</u>				
	<u>Supply, assemble and fix the following steel framed windows, complete with 5mm thick clear glass in sizes not exceeding 0.15 square metres and all necessary approved ironmongery and fittings fixed to opening including bolting the framing to concrete or masonry, making good disturbed surfaces all to architect's drawings and approval.</u>				
A	Window overall size 2000x 1500mm high	4	No		
B	Window overall size 600x 600mm high	2	No		
	<u>Glazing</u>				
	<u>4mm Thick clear sheet glass and glazing to steel</u>				
C	clear sheet glazing 0.5-1.00m ²	12	Sm		
	<u>Painting</u>				
	<u>Prepare and apply pure white oil undercoat/primer and three coats of gross oil paint on metal:-</u>				
D	General surfaces of steel windows (Measured overall)	1	Sm		
	TOTAL FOR ELEMENT NO. 6 ~ WINDOWS				
	Carried to Summary				

ITEM	DESCRIPTION	QTY	UNIT	RATE	AMOUNT
	ELEMENT NO. 7- FINISHES				
	<u>Floor Finishings</u>				
	<i>Cement and sand (1:4) screed to floor:</i>				
	<i>in</i>				
A	40mm thick cement sand screed	52	Sm		
	<u>External Paved Areas</u>				
D	600x600x50mm thick precast concrete paving slabs (standard) jointed in cement and sand mortar and laid on and including 50mm thick sand bed (Sample of paving slab to be provided by the Contractor for approval by the site Engineer).	19	Sm		
	<u>Wall finishes</u>				
	<u>Externally</u>				
	<i>15mm Cement and sand (1:3) render on block wall or concrete work to</i>				
C	12mm Thick wood float screed rendered; externally	49	Sm		
	<u>Internally</u>				
	<i>Gauged plaster 9mm first coat of cement/lime putty/sand (1:2:9):3mm second coat of cement/lime putty/sand (1:1:6): steel troweled; on masonry or concrete: to</i>				
D	Walls; internally	165	Sm		
	<i>Prepare and apply two undercoats emulsion paint and two finishing coats of first quality Silk Vinyl emulsion paint (Colour to approval by the site engineer) as:-</i>				
E	Plastered walls: internally	165	Sm		
	<i>Fill uneven surfaces with stucco filler to approval including sanding of all uneven surfaces; apply one coats of white wash and two finishing coats of premium quality acrylic latex paint which is offering protection against severe tropical weather (Colour to approval by the site engineer) as:</i>				
F	Rendered surfaces; externally	25	Sm		
	<i>Carried to collection</i>				

ITEM	DESCRIPTION	QTY	UNIT	RATE	AMOUNT
A	<u>Ceiling Finishes</u> 9mm thick chipboard ceiling fixed to and including 50x50mm cypress branderings at 600mm c/c both ways including filler, with clout headed nails and set out in symmetrical panels with 'V' joints	55	Sm		
	<i>Carried to collection</i>				
	<u>COLLECTION</u> From page 9 From page 10 above				
	TOTAL FOR ELEMENT NO. 7 ~ FINISHES				
	Carried to Summary				

STAFF QUARTERS BLOCK SUMMARY			
	<u>BILL NO. 2</u>		
		<u>From</u>	
		<u>page</u>	
1	SUBSTRUCTURES		
2	R. C. STRUCTURE		
3	WALLING		
4	ROOF CONSTRUCTION AND COVERING		
5	DOORS		
6	WINDOWS		
7	FINISHES		
Carried to Main Summary			

ITEM	DESCRIPTION	UNIT	UANTIT	RATE	KSHS
	<u>SUBSTRUCTURES WORKS- CONTINUED</u>				
	Hardcore backfill				
A	Supply,transport,deliver and handpack gravel 300mm thick below foundation slab,this includes	SM	12		
B.	50mm thick quarry dust blinding to hardcore(measured separately)	SM	12		
	<u>Damp proof membrane</u>				
C.	Two layers 1000 gauge polythene sheeting with minimum 300mm side and end laps	SM	12		
	<u>Concrete class 1:3:6 (40mm aggregate)</u>				
D.	50mm thick blinding foundation in trenches	SM	13		
	<u>Supply and put in place vibrated reinforced concrete class 25(20mm aggregate) in:-</u>				
E.	Strip footing	CM	2		
F.	150mm thick ground floor slab	SM	12		
	Total carried to collection page 2 of 11			Kshs.	

Item No.	Description	Unit	Quantity	Rate	Kshs.
	<u>SUBSTRUCTURES WORKS-CONTINUED</u>				
	<u>Supply and construct formwork to the sides of the concrete surfaces. The formwork shall comprise acceptable timber or steel shutters with and including mould oil, putting in place and striking off. Where the surface of concrete is disturbed by striking off, it shall be repaired at the contractors cost</u>				
A.	Formwork to sides of strip foundation	SM	7		
B.	Formwork to soffits of suspended slab	SM	5		
C.	Formwork to sides of ground floor slab 150mm wide	LM	14		
D.	Form or leave small hole size not exceeding 0.1m ² in suspended concrete slab	NO	2		
	<u>Supply, transport, deliver, cutting, bending and installing of steel rods</u>				
	<u>High tensile square twisted reinforcement bars to B.S 4461 including bends, hooks, tying wire, distance blocks, chairs and spacers</u>				
E.	Assorted reinforcement bars 10mm diameter	KG	35		
F.	Assorted reinforcement bars 12mm diameter	KG	66		
	<u>Supply, transport and install mesh fabric reinforcement</u>				
G.	Fabric mesh reinforcement BRC type A142 weighing 2.22kg/m ² with	SM	12		
Total carried to collection page 3 of 11					

Item No.	Description	Unit	Quantity	Rate	Kshs.
	<u>WALLING</u>				
	<u>External and internal walling</u>				
	<u>The quantity is calculated as gross, including the edges, the necessary corners. The openings will be deducted where the walls will be filled with other materials other than masonry/blockwork</u>				
	<u>Supply, transport, deliver selected quality natural bushes stone for walling. The wall will be bedded and jointed in 1:4 cement and sand mortar and reinforced with 20 gauge hoop iron every alternate course. The concrete blocks should have a minimum crushing strength of 7N/mm²</u>				
	150mm thick	SM	48		
	<u>Supply, transport, deliver and install dump proof courses under masonry or concrete block walling</u>				
B	150mm wide with and including all necessary laps	LM	24		
	<u>install approved precast concrete coping bedded with and including cement and sand mortar (1:3), all coping shall be straight and in line with the masonry/concrete block walling</u>				
C	150mm wide precast concrete coping twice weathered and twice throated	LM	11		
	<u>Supply, transport, deliver and install in place precast concrete louvre blocks jointed with and including cement sand mortar(1:3) as directed by the Engineer</u>				
	200mm thick precast concrete louvre blocks	SM	2		
Total carried to collection page 5 of 11					

Item No.	Description	Unit	Quantity	Rate	Kshs.
	<u>CONCRETE WORKS</u>				
	<u>Supply and put in place vibrated reinforced concrete class 25 (20mm aggregate) in:-</u>				
A	Ring beams	CM	1		
	<u>Supply and construct formwork to the sides of the concrete surfaces. The formwork shall comprise acceptable timber or steel shutters with and including mould oil, putting in place and striking off. Where the surface of concrete is disturbed by the striking off, it shall be repaired at the Contractor's cost</u>				
B	Formwork to sides and soffits of ring beam	SM	6		
	<u>bending and installing of steel rods</u> <u>high tensile square twisted reinforcement bars to B.S. 4461 including bends, hooks, tying wire, distance blocks, chairs and spacers</u>				
C	Assorted reinforcement bars 12mm diameter	KG	35		
D	Assorted reinforcement bars 8mm diameter	KG	12		
	Total carried to collection page 6 of 11				

Item	Description	Unit	Quantity	Rate	Kshs.
	<u>ROOFING</u>				
	<u>Where welding will be done on site, the contractor will provide approved welding machines with fire extinguishers. Safet clothing shall be worn at all times while welding. No hot works will be allowed inside a building without necessary permits by the Engineer</u>				
	<u>Supply, transport and install Framed structural steelwork to B.S 4360 Grade 43C, with shop fabricated connections and site welded, bolted or riveted intersections. The structural steelwork shall be installed at a height approximately 4m from ground surface</u>				
A	hollow section roof structure installed directed/instructed by the Engineer	LM	38		
B	40 x 40 x 2.5mm thick square hollow section roof purlins installed directed/instructed by the Engineer	LM	26		
	<u>Roof covering</u>				
	<u>Supply, transport and install G.C.I roofing sheets . The roofing sheets to be installed using the strict manufacturer's specifications and with including all necessary bolts, nuts and other affixtures. Where raking and curved cutting will be required, the contractor will do them at his own cost</u>				
C	28 Gauge roof covering; including all necessary accessories	SM	9		
D	150mm diameter medium duty uPVC ventpipe fixed to the wall with and including all necessary steel brackets at 600mm centres	LM	6		
Total carried to collection page 7 of 11					

Item No.	Description	Unit	Quantity	Rate	Kshs.
	<u>Fascia board</u>				
	<u>Supply, transport, deliver and install cypress fascia board with smooth surfaces on both sides. One edge of the timber will be weathered</u>				
A	25mm thick x 300mm wide cypress fascia board firmly fixed to steel trusses and purlins	LM	11		
	<u>Supply, transport, prepare and apply gloss paint to plastered general surfaces. The paint shall comply with the specifications supplied alongside with these Bills</u>				
	<u>The contractor shall apply undercoat, skimming and two finishing coats of gloss paint. The engineer shall select the colour</u>				
B	Gloss paint to wooden surfaces	SM	7		
	Subtotal				
	Brought forward from page 7				
Total carried to collection page 8 of 11					

Item No.	Description	Unit	Quantity	Rate	Kshs.
	DOORS				
	<u>purpose made mild steel door with one coat red lead oxide primer comprising of 75x50x2mm thick rolled hollow section frame all round 40x40x2mm thick R.H.S horizontal/vertical frames all welded together as described:-</u>				
A	900 x 2400mm single leaf steel made door to architects specification	NO	2		
	IRONMONGERY				
	<u>Supply and fix the following ironmongery dry frame union or any other equal and approved manufacturer:</u>				
B	100mm brass hinges	NO	4		
C	Three lever ' union' mortice lock complete with furniture	NO	2		
D	prepare and apply three coats of oil paint to general surfaces of steel doors internally and externally	SM	2		
E	Prepare and apply three coats of clear plyurethane	SM	4		
Total carried to collection page 9 of 11					

Item No.	Description	Unit	Quantity	Rate	Kshs.
	<u>EXTERNAL AND INTERNAL FINISHES</u>				
	<u>WALL FINISHES</u>				
	<u>12mm Thick cement and sand 1:4 plaster or rendering to:-</u>				
B	Walls steel trowels smooth internally	SM	89		
C	Prepare and apply three coats of silk vinyl emulsion paint to general surfaces of plastered or rendered to existing walls	SM	89		
D	Ditto but external wall beam	SM	7		
	<u>FLOOR FINISHES</u>				
	<u>to prepare and clean the floor surface before placing floor finish. The engineer will inspect the cleaned surface before any finish is applied</u>				
	<u>25mm thick coloured cement sand (1:4) screed</u> as described in:-				
	25mm Thick cement and sand (1:4) screed to	SM	16		
Total carried to collection page 10 of 11					

Item No.	Description	Unit	Quantity	Rate	Kshs.
	SUMMARY OF ELEMENTS				
A	SUBSTRUCTURE				
B	WALLING				
C	CONCRETE WORKS				
D	ROOFING				
E	DOORS				
F	FINISHES				
	Subtotal				
Total Carried to Grand Summary page					Kshs.

4. SOAK PIT

ITEM	DESCRIPTION	QTY	UNIT	RATE	AMOUNT
	<u>ITEM 1</u> EXCAVATION				
	<u>SOAKPITS</u>				
C	Excavate pit for circular soak pit as per detailed drawing No. (50) 5345, depth not less than 3.0 m n.e 5.0 m	cm	44		-
	<u>Concrete class 15 (mix 1:3:6)</u>				
D	Mix and place 50 mm thick concrete blinding in strip footing	SM	14		-
E	Ditto but 100 mm thick strip footing	SM	10		-
	<u>Walling</u>				
F	150 thick dressed natural stone to detailed 50 (5345)	SM	46		-
G	12 mm thick water proof cement rendering to vertical walls	sm	46		-
	<u>Vibrated reinforced concrete class 20/20 (mix 1:3:6)</u>				
H	Mix and place concrete class 20/20 in 150 mm thick suspended slab	SM	10		-
	<u>Mild steel reinforcement bars to B.S 4449</u>				
I	12 mm diameter round bars	Kg	56		-
M	Provide 200 mm diameter stone blocks or hardcore in soak pits	cm	14		-
N	Provide and fix 600 x 450 mm medium duty c.1 manhole cover and frame to B.S 497	No	10		-
	Total carried to collection				-

5. ELECTRICAL WORKS

Dispensary block

Item	Description	Qty	Unit	Rates	Amount
	<p><u>solar installation works for dispensary block</u></p> <p>indicated product brands are only a guide to the quality required supply, install, test, commission and handover in proper working condition</p> <p><u>The solar system services shall cover all items/materials required to have in place an efficient and functional system in compliance with the design objective</u></p>				
A	<u>SOLAR ACCESSORIES</u>				
i	285Wp monocrystalline solar panels as trunsun solar panel or equal and approved type complete with solar module grounding lugs and aluminium roof mounting structure	6	NO		-
ii	200AH maintenance free, deep cycle batteries as type RITAR batteries or equal and approved complete with battery rack,lugs and interconnecting cables as Ritar or approved equivalent	8	NO		-
iii	Multiplus inverter charger 12/1600 70-16 autodetect, Pure sine wave LCD digital graphic display VICTRON or approved equivalent	1	NO		-
iv	PhotoVoltaic module-to-module cable connector with plug	1	ITEM		-
v	60A DC disconnectors	2	unit		-
vi	12/24V DC, MPPT,80Amps charge controller as OUTBACK or approved equivalent	1	NO		-
	<i>Total solar accessories carried to collection</i>				-

Item	Description	Qty	Unit	Rates	Amount
B	LIGHTING lighting points, wired in 3X1.5mm ² twin with earth sheathed PVC insulated copper cables, but without the switch for; One gang one way switch One gang two way switching 3 gang 3 way switching	10 4 1	NO NO NO		- - -
C	LIGHTING ACCESSORIES 10Amps single moleded plate switch for mounting as CRABTREE or equal and approved.				
i	One way one gang as CRABTREE ca	10	NO		-
ii	Ditto one gang two way	4	NO		-
iii	three way three gang	1	NO		-
D	LIGHTING FITTINGS				
i	1200MM, 1X18W single batten fluorescent, surface mounted . As CROMPTON, THORN or equal and approved.	17	NO		-
ii	18W bulb complete with bulkhead and accessories, tightly enclosed on the wall surface for security lighting	1	NO		-
iii	Weather proof lighting fixtures complete with weather proof bulkheads for security lighting	7	NO		-
E	POWER INSTALLATIONS				
i	13 Amps twin socket outlet point, recessed in the wall wired in 2.5 mm ² twin with earth pvc insulated copper cables in radial circuit drawn in 25mm ϕ heavy duty conduits concealed in the building fabric, from	13	NO		-
F	POWER ACCESSORIES 13 Amps twin switched double pole socket outlet plate for flush mounting and connection to raw power supply. As CRABTREE catalogue No 9704 or equal and approved.	13	NO		-
	Total lighting and power carried to collection				-

Item	Description	Qty	Unit	Rates	Amount
G	ELECTRICAL POWER DISTRIBUTION				
1	6 way SPN distribution board incorporating SPN integral isolator, lockable front door, labeling front cover as CRABTREE or approved equivalent.	1	NO		-
2	<u>Miniature circuit breaker for incorporation in distribution boards, As CRABTREE, LOADSTAR, SAPHIRE, MERLIN GERIN or equal and approved</u>				
i	10 Amps SP	2	NO		
ii	20 Amps SP	2	NO		
4	Heavy duty conduits complete with bends, couplers and all accessories as follows:-				
i	38mm ϕ for solar power link duct from solar panels to the charge controller	10	LM		-
H	EARTHING				
	Earth rod comprising 15mm ϕ X 1500mm long steel cored copper clad earth electrode, 6.0mm ² single core earth lead , earth clamp and all accessories including an inspection pit with removable concrete cover. Ensure earth resistance $\leq 5\Omega$	1	NO		-
	<i>Total electrical distribution and earthing carried forward to collection</i>				-

Item	Description	Qty	Unit	Rates	Amount
COLLECTION PAGE					
A	<i>Total solar accessories carried to collection</i>				-
B	<i>Total lighting and power carried to collection</i>				-
C	<i>Total electrical distribution and earthing carried forward to collection</i>				-
	Total dispensary electrical works carried to summary				-

Staff house wiring

Item	Description	Qty	Unit	Rates	Amount
A	<u>LIGHTING</u> lighting points, wired in 3X1.5mm2 twin with earth sheathed PVC insulated copper cables, but without the switch for;				
i	One gang one way switch	6	NO		-
ii	Two gang two way switching	4	NO		-
B	<u>LIGHTING ACCESSORIES</u> 10Amps single moleded plate switch for mounting as CRABTREE or equal and approved.				
i	One way one gang as CRABTREE ca	6	NO		-
ii	Ditto two gang two way	4	NO		-
C	<u>LIGHTING FITTINGS</u>				
i	1200MM, 1X18W single batten fluorescent, surface mounted . As CROMPTON, THORN or equal and approved.	6	NO		-
ii	18W bulb complete with bulkhead and accessories, tightly enclosed on the wall surface for security lighting	4	NO		-
iii	Weather proof lighting fixtures complete with weather proof bulkheads for security lighting	4	NO		-
D	<u>POWER INSTALLATIONS</u>				
i	13 Amps twin socket outlet point, recessed in the wall wired in 2.5 mm2 twin with earth pvc insulated copper cables in radial circuit drawn in 25mmφ heavy duty conduits concealed in the building fabric, from	4	NO		-
E	<u>POWER ACCESSORIES</u> 13 Amps twin switched double pole socket outlet plate for flush mounting and connection to raw power supply. As CRABTREE catalogue No 9704 or equal and approved.	4	NO		-
	<i>Total lighting and power carried to collection</i>				-

Item	Description	Qty	Unit	Rates	Amount
F	ELECTRICAL POWER DISTRIBUTION				
i	incorporating SPN integral isolator, lockable front door, labeling front cover as CRABTREE or approved equivalent. <i><u>Miniature circuit breaker for incorporation in distribution boards, As CRABTREE, LOADSTAR, SAPHIRE, MERLIN GERIN or equal and approved</u></i>	1	NO		-
i	10 Amps SP	2	NO		
ii	20 Amps SP	2	NO		
	<i>Subtotal carried to collection page</i>				
	<u>COLLECTION</u>				
	<i>Brought forward from previous page</i>				
	<i>Brought forward from above page</i>				
	<i>Total staff house wiring carried to summary page</i>				-

Item	Description	Qty	Unit	Rates	Amount
	summary electrical works				
A	<i>Total solar installation for dispensary block</i>				-
B	<i>Total for staff house wiring works</i>				-
	TOTAL FOR ELECTRICAL CARRIED TO GRAND SUMMA				-

GRAND SUMMARY

ITEM	DESCRIPTION	For Official Use only	For Tenderer's use only
A	Bill No. 1 Preliminaries		
B	Bills No. 2 Measured Works:		
i	BUILDING WORKS OPD		
ii	STAFF QUARTERS		
iii	2 DOOR PIT LATRINE		
iv	SOAK PIT		
v	ELECTRICAL WORKS		
C	P. C. & Provisional Sums		
	Sub - Total		
TOTAL CARRIED TO FORM OF TENDER: KSHS			
Amount in words: Kenya Shillings			
Tenderer's Signature			
Address			
Date			
Witness Signature			
Address			
Date			
		GS/1	

Bill No. 3: Schedule of Daywork Rates - Labor

Item no.	Description	Unit	Nominal quantity	Rate	Amount
	Subtotal				
	Allow ___ percent ^a of Subtotal for Contractor's overhead, profit, etc., in accordance with paragraph 3 (b) above.				
	Total for Daywork (carried forward to Daywork Summary, p. _____)				

a. To be entered by the Tenderer.

Bill No. 4: Schedule of Daywork Rates - Materials

Item no.	Description	Unit	Nominal quantity	Rate	Extended amount
	Subtotal				
	Allow ____ percent a. of Subtotal for Contractor's overhead, profit, etc., in accordance with paragraph 4 (b) above.				
	Total for Daywork: Materials (carried forward to Daywork Summary, p. _____)				

a. To be entered by the Tenderer.

Bill No. 5: Schedule of Daywork Rates - Contractor's Equipment

<i>Item no.</i>	<i>Description</i>	<i>Nominal quantity (hours)</i>	<i>Basic hourly rental rate</i>	<i>Extended amount</i>
	Allow _ percent ^a of Subtotal for Contractor's overhead, profit, etc., in accordance with paragraph 5 above.			
Total for Daywork: Contractor's Equipment (carried forward to Daywork Summary, p. _____)				

a. To be entered by the Tenderer.

Bill No. 6: Daywork Summary

	<i>Amount^a</i>	<i>% Foreign</i>	<i>Currency</i>
1. Total for Daywork: Labor			
2. Total for Daywork: Materials			
3. Total for Daywork: Contractor's Equipment			
Total for Daywork (Provisional Sum) (carried forward to Summary of Bills of Quantities, p. _____)			

Bill No. 7: Provisional Sums

<i>Bill no.</i>	<i>Item no.</i>	<i>Description</i>	<i>Amount</i>
1			
2			
3			
4			
etc.			
Total for Specified Provisional Sums (carried forward to Grand Summary)			

GRAND SUMMARY

SUMMARY ITEMS	<i>Page</i>	<i>Amount</i>
Bill No. 1: Preliminary Items		
Bill No. 2: Work Items		

Bill No 3: Daywork Summary		
Bill No 4: Provisional Sums		
Subtotal of Bills No 1-4		
Allow for any Discounts ⁱ		
TOTAL TENDER PRICE Carried forward to Form of Tender		

(i) If a percentage used, it should be indicated on which Bill No. items but on Bill No.4 – Provisional Sums.

Amount in words;
Kenya Shillings;
Contractor's Name:
Address:
Date:
Signature:
Witness Name:
Address:
Date:
Signature:

STANDARD FORMS

List of Standard Forms

- (i)** Form of Invitation for Tenders
- (ii)** Form of Tender
- (iii)** Letter of Acceptance
- (iv)** Form of Agreement

- (v) Form of Tender Security**
- (vi) Performance Bank Guarantee**
- (vii) Performance Bond**
- (viii) Bank Guarantee for Advance Payment**
- (ix) Qualification Information**
- (x) Tender Questionnaire**
- (xi) Confidential Business Questionnaire**

(xii)Details of Sub-Contractors

Mandatory Requirements

1. Tender submission in the correct format
2. Tender has been signed by the lawfully authorized to do so/power of attorney
3. Required number of copies submitted
4. Copy of certificate of incorporation
5. Copy of registration certificate with National Construction Authority in classes specified above
6. Certificate of Valid Tax Compliance Certificate
7. Copy of PIN registration Certificate
8. Copy of single Business Permit
9. Copy Of CR12 Form
10. Copy of Certificate for Access to Government procurement opportunities for disadvantaged groups
11. Bidder serialized all pages
12. Bid security in the right amount and format
13. Signing of the form of Tender
14. MR receipt attached/Downloaded

FORM OF INVITATION FOR TENDERS

_____ [date]

To: _____ [name of Contractor]
 _____ [address]

Dear Sirs:

Reference: _____ [Contract Name]

You have been prequalified to tender for the above project.

We hereby invite you and other prequalified tenderers to submit a tender for the execution and completion of the above Contract.

A complete set of tender documents may be purchased by you from _____
[mailing address, cable/telex/facsimile numbers].

Upon payment of a non-refundable fee of Kshs _____

All tenders must be accompanied by _____ number of copies of the same and a tender security in the form and amount specified in the tendering documents, and must be delivered to

[address and location]

at or before _____ (time and date). Tenders will be opened immediately thereafter, in the presence of tenderers' representatives who choose to attend.

Please confirm receipt of this letter immediately in writing by cable/facsimile or telex.

Yours faithfully,

Authorised Signature

Name and Title

FORM OF TENDER

TO: _____ [Name of Employer] _____ [Date]

_____ [Name of Contract]

Dear Sir,

1. In accordance with the Conditions of Contract, Specifications, Drawings and Bills of Quantities/Schedule of Rates for the execution of the above named Works, we, the undersigned offer to construct, install and complete such Works and remedy any defects therein for the sum of Kshs. _____ [Amount in figures] Kenya

Shillings _____
_____ [Amount in words]

2. We undertake, if our tender is accepted, to commence the Works as soon as is reasonably possible after the receipt of the Employer's Representative's notice to commence, and to complete the whole of the Works comprised in the Contract within the time stated in the Appendix to Conditions of Contract.
3. We agree to abide by this tender until _____ [Insert date], and it shall remain binding upon us and may be accepted at any time before that date.
4. Unless and until a formal Agreement is prepared and executed this tender together with your written acceptance thereof, shall constitute a binding Contract between us.
5. We understand that you are not bound to accept the lowest or any tender you may receive.

Dated this _____ day of _____ 20_____

Signature _____ in the capacity of _____

duly authorized to sign tenders for and on behalf
of

_____ [Name of Tenderer] of
_____ [Address of Tenderer]

Witness; Name _____

Address _____

Signature _____

Date _____

(Amend accordingly if provided by Insurance Company)

LETTER OF ACCEPTANCE

[letterhead paper of the Employer]

_____ [date]

To: _____
[name of the Contractor]

[address of the Contractor]

Dear Sir,

This is to notify you that your Tender dated _____ for the execution of _____ [name of the Contract and identification number, as given in the Tender documents] for the Contract Price of Kshs. _____ [amount in figures][Kenya Shillings _____ (amount in words)] in accordance with the Instructions to Tenderers is hereby accepted.

You are hereby instructed to proceed with the execution of the said Works in accordance with the Contract documents.

Authorized Signature

Name and Title of Signatory

Attachment : Agreement

FORM OF AGREEMENT

THIS AGREEMENT, made the _____ day of _____ 20 _____ between _____ of [or whose registered office is situated at] _____ (hereinafter called “the Employer”) of the one part AND _____ of [or whose registered office is situated at] _____ (hereinafter called “the Contractor”) of the other part.

WHEREAS THE Employer is desirous that the Contractor executes

_____ (name and identification number of Contract) (hereinafter called “the Works”) located at _____ [Place/location of the Works] and the Employer has accepted the tender submitted by the Contractor for the execution and completion of such Works and the remedying of any defects therein for the Contract Price of Kshs _____ [Amount in figures], Kenya Shillings _____ [Amount in words].

NOW THIS AGREEMENT WITNESSETH as follows:

1. In this Agreement, words and expressions shall have the same meanings as are respectively assigned to them in the Conditions of Contract hereinafter referred to.
2. The following documents shall be deemed to form and shall be read and construed as part of this Agreement i.e.
 - (i) Letter of Acceptance
 - (ii) Form of Tender
 - (iii) Conditions of Contract Part I
 - (iv) Conditions of Contract Part II and Appendix to Conditions of Contract
 - (v) Specifications
 - (vi) Drawings
 - (vii) Priced Bills of Quantities/Priced Schedule of Rates [whichever is applicable]
3. In consideration of the payments to be made by the Employer to _____ the Contractor as hereinafter mentioned, the Contractor hereby covenants with the Employer to execute and complete the Works and remedy any defects therein in conformity in all respects with the provisions of the Contract.
4. The Employer hereby covenants to pay the Contractor in consideration of the execution and completion of the Works and the remedying of defects therein, the Contract Price or such other sum as may become payable under the provisions of the Contract at the times and in the manner prescribed by the Contract.

IN WITNESS whereof the parties thereto have caused this Agreement to be executed the day and year first before written.

The common Seal of _____

Was hereunto affixed in the presence of _____

Signed Sealed, and Delivered by the said _____

Binding Signature of Employer _____

Binding Signature of Contractor _____

In the presence of (i) Name _____

Address _____

Signature _____

[ii] Name _____

Address _____

Signature _____

FORM OF TENDER SECURITY

WHEREAS(hereinafter called “the Tenderer”) has submitted his tender dated for the construction of
..... (name of Contract)

KNOW ALL PEOPLE by these presents that WE having our registered office at(hereinafter called “the Bank”), are bound unto(hereinafter called “the Employer”) in the sum of Kshs..... for which payment well and truly to be made to the said Employer, the Bank binds itself, its successors and assigns by these presents sealed with the Common Seal of the said Bank this Day of20.....

THE CONDITIONS of this obligation are:

1. If after tender opening the tenderer withdraws his tender during the period of tender validity specified in the instructions to tenderers
Or
2. If the tenderer, having been notified of the acceptance of his tender by the Employer during the period of tender validity:
 - (a) fails or refuses to execute the form of Agreement in accordance with the Instructions to Tenderers, if required; or
 - (b) fails or refuses to furnish the Performance Security, in accordance with the Instructions to Tenderers;

We undertake to pay to the Employer up to the above amount upon receipt of his first written demand, without the Employer having to substantiate his demand, provided that in his demand the Employer will note that the amount claimed by him is due to him, owing to the occurrence of one or both of the two conditions, specifying the occurred condition or conditions.

This guarantee will remain in force up to and including thirty (30) days after the period of tender validity, and any demand in respect thereof should reach the Bank not later than the said date.

[date]

[signature of the Bank]

[witness]

[seal]

PERFORMANCE BANK GUARANTEE

To: _____(Name of Employer) _____(Date)
_____ (Address of Employer)

Dear Sir,

WHEREAS _____(hereinafter called “the Contractor”) has undertaken, in pursuance of Contract No. _____ dated _____ to execute _____ (hereinafter called “the Works”);

AND WHEREAS it has been stipulated by you in the said Contract that the Contractor shall furnish you with a Bank Guarantee by a recognised bank for the sum specified therein as security for compliance with his obligations in accordance with the Contract;

AND WHEREAS we have agreed to give the Contractor such a Bank Guarantee:

NOW THEREFORE we hereby affirm that we are the Guarantor and responsible to you, on behalf of the Contractor, up to a total of Kshs. _____ (*amount of Guarantee in figures*) Kenya Shillings _____ (*amount of Guarantee in words*), and we undertake to pay you, upon your first written demand and without cavil or argument, any sum or sums within the limits of Kenya Shillings _____ (*amount of Guarantee in words*) as aforesaid without your needing to prove or to show grounds or reasons for your demand for the sum specified therein.

We hereby waive the necessity of your demanding the said debt from the Contractor before presenting us with the demand.

We further agree that no change, addition or other modification of the terms of the Contract or of the Works to be performed thereunder or of any of the Contract documents which may be made between you and the Contractor shall in any way release us from any liability under this Guarantee, and we hereby waive notice of any change, addition, or modification.

This guarantee shall be valid until the date of issue of the Certificate of Completion.

SIGNATURE AND SEAL OF THE GUARANTOR _____

Name of Bank _____

Address _____

Date _____

(Amend accordingly if provided by Insurance Company)

PERFORMANCE BOND

By this Bond, We _____ of (or whose registered office is situated at) _____ as Principal (hereinafter called “the Contractor”) and _____ of [or whose registered office is situated at] _____ as Surety (hereinafter called “the Surety”), are held and firmly bound unto _____ of [or whose registered office is situated at] _____ as Obligee (hereinafter called “the Employer”) in the amount of Kshs. _____ [amount of Bond in figures] Kenya Shillings

[amount of Bond in words], for the payment of which sum well and truly, the Contractor and the Surety bind themselves, their heirs, executors, administrators, successors and assigns, jointly and severally, firmly by these presents.

WHEREAS the Contractor has entered into a Contract with the Employer dated the _____ day of _____ 20 _____ for the execution of _____

[name of Contract] in accordance with the Contract documents, Specifications and amendments thereto, which to the extent herein provided for, are by reference made part hereof and are hereinafter referred to as the Contract.

NOW THEREFORE, the Condition of this Obligation is such that, if the Contractor shall promptly and faithfully perform the said Contract (including any amendments thereto), then this obligation shall be null and void; otherwise it shall remain in full force and effect. Whenever the Contractor shall be, and declared by the Employer to be, in default under the Contract, the Employer having performed the Employer’s obligations thereunder, the Surety may promptly remedy the default, or shall promptly:

- (1) complete the Contract in accordance with its terms and conditions; or
- (2) obtain a tender or tenders from qualified tenderers for submission to the Employer for completing the Contract in accordance with its terms and conditions, and upon determination by the Employer and the Surety of the lowest responsive tenderer, arrange for a Contract between such tenderer and Employer and make available as work progresses (even though there should be a default or a succession of defaults under the Contract or Contracts of completion arranged under this paragraph) sufficient funds to pay the cost of completion less the balance of the Contract Price; but not exceeding, including other costs and damages for
- (3) which the Surety may be liable hereunder, the amount set forth in the first paragraph hereof.

The term “Balance of the Contract Price”, as used in this paragraph, shall mean the total amount payable by the Employer to the Contractor under the

Contract, less the amount properly paid by the Employer to the Contractor; or

(4) pay the Employer the amount required by the Employer to complete the Contract in accordance with its terms and conditions up to a total not exceeding the amount of this Bond.

The Surety shall not be liable for a greater sum than the specified penalty of this Bond.

Any suit under this Bond must be instituted before the expiration of one year from the date of issuance of the Certificate of Completion.

No right of action shall accrue on this Bond to or for the use of any person or corporation other than the Employer named herein or the heirs, executors, administrators, successors and assigns of the Employer.

In testimony whereof, the Contractor has hereunto set his hand and affixed his seal, and the Surety has caused these presents to be sealed with his corporate seal duly attested by the signature of his legal representative, this _____ day of _____ 20_____

SIGNED ON _____ SIGNED ON _____

On behalf of _____ On behalf of _____
[name of Contractor] *[name of Surety]*

By _____ By _____

In the capacity of _____ In the capacity of _____

In the presence of;Name _____ In the presence of;Name _____

Address _____ Address _____

Signature _____ Signature _____

Date _____ Date _____

QUALIFICATION INFORMATION

1. Individual Tenderers or Individual Members of Joint Ventures

1.1 Constitution or legal status of tenderer (attach copy or Incorporation Certificate);
Place of registration: _____

Principal place of business _____

Power of attorney of signatory of tender _____

1.2 Total annual volume of construction work performed in the last five years

Year	Volume	
	Currency	Value

1.3 Work performed as Main Contractor on works of a similar nature and volume over the last five years. Also list details of work under way or committed, including expected completion date.

Project name	Name of client and contact person	Type of work performed and year of completion	Value of Contract
_____	_____	_____	_____
_____	_____	_____	_____
_____	_____	_____	_____

1.4 Major items of Contractor's Equipment proposed for carrying out the Works. List all information requested below.

Item of Equipment	Description, Make and age (years)	Condition(new, good, poor) and number available	Owned, leased (from whom?), or to be purchased (from whom?)
_____	_____	_____	_____
_____	_____	_____	_____
_____ (etc.)	_____	_____	_____

1.5 Qualifications and experience of key personnel proposed for administration and execution of the Contract. Attach biographical data.

Position	Name	Years of experience (general)	Years of experience in proposed position
Project Manager _____ _____	_____	_____	_____
(etc.)	_____	_____	_____

1.6 Financial reports for the last five years: balance sheets, profit and loss statements, auditor's reports, etc. List below and attach copies.

1.7 Evidence of access to financial resources to meet the qualification requirements: cash in hand, lines of credit, etc. List below and attach copies of supportive documents.

1.8 Name, address and telephone, telex and facsimile numbers of banks that may provide reference if contacted by the Employer.

1.9 Statement of compliance with the requirements of Clause 1.2 of the Instructions to Tenderers.

1.10 Proposed program (work method and schedule) for the whole of the Works.

2 Joint Ventures

- 2.4 The information listed in 1.1 – 1.10 above shall be provided for each partner of the joint venture.
- 2.5 The information required in 1.11 above shall be provided for the joint venture.
- 2.6 Attach the power of attorney of the signatory(ies) of the tender authorizing signature of the tender on behalf of the joint venture
- 2.7 Attach the Agreement among all partners of the joint venture (and which is legally binding on all partners), which shows that:
- a) all partners shall be jointly and severally liable for the execution of the Contract in accordance with the Contract terms;
 - b) one of the partners will be nominated as being in charge, authorized to incur liabilities and receive instructions for and on behalf of any and all partners of the joint venture; and
 - c) the execution of the entire Contract, including payment, shall be done exclusively with the partner in charge.

TENDER QUESTIONNAIRE

Please fill in block letters.

1. Full names of tenderer;
.....
2. Full address of tenderer to which tender correspondence is to be sent (unless an agent has been appointed below);
.....
3. Telephone number (s) of tenderer;
.....
4. Telex of tenderer;
.....
5. Name of tenderer's representative to be contacted on matters of the tender during the tender period;
.....
6. Details of tenderer's nominated agent (if any) to receive tender notices. This is essential if the tenderer does not have his registered address in Kenya (name, address, telephone, telex);
.....
.....

Signature of Tenderer

Make copy and deliver to: _____ (*Name of Employer*)

CONFIDENTIAL BUSINESS QUESTIONNAIRE

You are requested to give the particulars indicated in Part 1 and either Part 2 (a), 2 (b) or whichever applies to your type of business.

You are advised that it is a serious offence to give false information on this Form.

Part 1 – General

Business Name

Location of business premises; Country/Town.....

Plot No..... Street/Road

Postal Address..... Tel No.....

Nature of Business.....

Current Trade Licence No..... Expiring date.....

Maximum value of business which you can handle at any time: K. pound.....

Name of your bankers.....

Branch.....

Part 2 (a) – Sole Proprietor

Your name in full..... Age.....

Nationality..... Country of Origin.....

Citizenship details

Part 2 (b) – Partnership

Give details of partners as follows:

	<i>Name in full</i>	<i>Nationality</i>	<i>Citizenship Details</i>	<i>Shares</i>
1
2
3

DETAILS OF SUB-CONTRACTORS

If the Tenderer wishes to sublet any portions of the Works under any heading, he must give below details of the sub-contractors he intends to employ for each portion.

Failure to comply with this requirement may invalidate the tender.

(1) Portion of Works to be sublet:

(i) Full name of Sub-contractor
and address of head office:
.....

(ii) Sub-contractor's experience of
similar works carried out
in the last 3 years with
Contract value:
.....
.....

(2) Portion of Works to be sublet:

(i) Full name of sub-contractor
and address of head office:
.....
.....

(ii) Sub-contractor's experience of similar works
carried out
in the last 3 years with
contract value:
.....

[Signature of Tenderer)

Date

LETTER OF NOTIFICATION OF AWARD

Address of Procuring Entity

To: _____

RE: Tender No. _____

Tender Name _____

This is to notify that the contract/s stated below under the above mentioned tender have been awarded to you.

1. Please acknowledge receipt of this letter of notification signifying your acceptance.
2. The contract/contracts shall be signed by the parties within 30 days of the date of this letter but not earlier than 14 days from the date of the letter.
3. You may contact the officer(s) whose particulars appear below on the subject matter of this letter of notification of award.

(FULL PARTICULARS) _____

SIGNED FOR ACCOUNTING OFFICER

DETAILS OF SUB-CONTRACTORS

If the Tenderer wishes to sublet any portions of the Works under any heading, he must give below details of the subcontractors he intends to employ for each portion.

Failure to comply with this requirement may invalidate the tender.

(1) Portion of Works to be sublet:

.....

[i] Full name of Sub-contractor and address of head office:

.....

[ii] Sub-contractor's experience of similar works carried out in the last 3 years with Contract value:.....

.....

.....

(2) Portion of Works to sublet:

.....

(i) Full name of sub-contractor and address of head office:

.....

.....

.....

(ii) Sub-contractor's experience of similar works carried out in the last 3 years with contract value:.....

.....

[Signature of Tenderer]

Date

CERTIFICATE OF TENDERER'S VISIT TO SITE

This is to certify that

[Name/s].....

.....

Being the authorized representative / Agent of [Name of Tenderer]

.....

.....

participated in the organized inspection visit of the site of the works for the **(Name of Contract:**)

..... day of 20.....

Signed.....

(Employer's Representative)

.....

NOTE: This form is to be completed whether the site visit is made at the time of the organized site or privately organized.

FORM OF WRITTEN POWER-OF-ATTORNEY

The Tenderer consisting of a joint venture shall state here below the name and address of his representative who is authorised to receive on his behalf correspondence in connection with the Tender.

.....
(Name of Tenderer's Representative in block letters)

.....
(Address of Tenderer's Representative)

.....
(Signature of Tenderer's Representative)

KEY PERSONNEL

DESIGNATION	NAME	NATIONALITY	SUMMARY OF QUALIFICATIONS AND EXPERIENCE
Headquarters: 1. Director 2. 3. 4. 5. etc.			
Site Office: 1. Site Superintendent 2. 3. 4. 5. etc.			

I certify that the above information is correct.

.....
(Title)

.....
(Signature)

..... ..
(Date)

**SCHEDULE OF COMPLETED BUILDING WORKS CARRIED OUT BY
THE TENDERER IN THE LAST EIGHT YEARS**

DESCRIPTION OF WORKS AND CLIENT	TOTAL VALUE OF WORKS (KSHS)	CONTRACT PERIOD (YEARS)	YEAR COMPLETED

I certify that the above Works were successfully carried out and completed by ourselves.

.....
(Title)

.....
(Signature)

.....
(Date)

*Value in Kshs using Central Bank of Kenya mean exchange rate at a reference date 30 days before date of tender opening.

SCHEDULE OF ONGOING PROJECTS

DESCRIPTION OF WORK AND CLIENT	CONTRACT PERIOD	DATE OF COMMENCEMENT	DATE OF COMPLETION	TOTAL VALUE OF WORKS (KSHS.)	PERCENTAGE COMPLETED TO DATE

I certify that the above Works are being carried out by ourselves and that the above information is correct.

.....
(Title)

.....
(Signature)

.....
(Date)

OTHER SUPPLEMENTARY INFORMATION

1. Financial reports for the last five years, balance sheets, profit and loss statements, auditors' reports etc. List them below and attach copies.

.....

2. Evidence of access to financial resources to meet the qualification requirements. Cash in hand, lines of credit etc. List below and attach copies of supporting documents

.....

3. Name, address, telephone, telex, fax numbers of the Tenderer's Bankers who may provide reference if contacted by the Employer.

.....

4. Information on current litigation in which the Tenderer is involved.

OTHER PARTY (IES)	CAUSE OF DISPUTE	AMOUNT INVOLVED (KSHS)

I certify that the above information is correct.

.....

.....

Title

.....

Signature

Date

SELF DECLARATION FORMS

SELF DECLARATION THAT THE PERSON/TENDERER IS NOT DEBARRED IN THE MATTER OF THE PUBLIC PROCUREMENT AND ASSET DISPOSAL ACT 2015.

I,, of Post Office Box being a resident of in the Republic of do hereby make a statement as follows:-

1. THAT I am the Company Secretary/ Chief Executive/Managing Director/Principal Officer/Director of (insert name of the Company) who is a Bidder in respect of Tender No. for(insert tender title/description) for(insert name of the Procuring entity) and duly authorized and competent to make this statement.

2. THAT the aforesaid Bidder, its Directors and subcontractors have not been debarred from participating in procurement proceeding under Part IV of the Act. 3. THAT what is deponed to hereinabove is true to the best of my knowledge, information and belief.

.....
(Title) (Signature) (Date) Bidder Official
Stamp

SELF DECLARATION FORMS

SELF DECLARATION THAT THE PERSON/TENDERER WILL NOT ENGAGE IN ANY CORRUPT OR FRAUDULENT PRACTICE

I..... of post office
Box.....
Being a resident of..... in the Republic
of.....

Do hereby make a statement as follows: -

1. THAT I am the Company secretary/Chief Executive/Managing Director/Principal Officer/Director of..... (insert name of Company) Who is bidder in respect of the Tender No. For (insert title/description) for..... (insert name of the procuring entity) and duly authorized and competent to make this statement
2. THAT the aforesaid Bidder, its servants and/or agents/subcontractors will not engage in any corrupt or fraudulent practice and has not been requested to pay any inducement to any member of the board, management, staff and/ or employees and or agents of (insert name of procuring entity) which is the procuring entity.
3. THAT the aforesaid Bidder, its servants and/or agents/subcontractors have not offered any inducement to any member of the board management, staff and/ or employees and or agents of (insert name of procuring entity)
4. THAT the aforesaid Bidder will not engage/has not engaged in any corrosive practice with other bidders participating in the subject tender.
5. THAT what is deponed to hereinabove is true to the best of my knowledge information and belief

.....
.....
(Title) (signature)
(Date)

Bidder Official Stamp

TENDER SECURING DECLARATION FORM

{The bidder shall complete in this form in accordance with instructions indicated}

Date----- {insert date (as day, month and year) of Bid Submission} Tender No -----

{insert number of bidding process}

To: {insert complete name of the purchaser}

We, the undersigned, declare that:

1 We understand that, according to your conditions, the bids must be supported by a Bid-
Securing Declaration.

2 We accept that we will automatically be suspended from being eligible for bidding in
any contract with the Purchase for the period of time ----- {insert number of months
or years}

Starting on ----- {insert date}, if we are in breach of our obligation(s) under
the bid conditions, because we

a. Have withdrawn our bid during the period of bid validity specified by us in
the

Bidding Sheet: or

b. Having been notified of the acceptance of our Bid by the Purchaser during
the period of bid validity,

i. fail or refuse to execute the contract if required or

ii. fail or refuse to furnish the performance Security in
accordance

with ITT

3 We understand that this Bid Securing Declaration shall expire if we are not the
successful Bidder, upon the earlier of

4 We understand that if we are a Joint Venture, the Bid Securing Declaration must be in
the name of the joint Venture that submits the bi, and the Venture has not been legally
constituted at the time of bidding, the Bid Securing Declaration shall be in the names of
all future partners as named in the letter of intent.

Signed: ----- {insert signature of person whose name and capacity are shown} in
the capacity of ----- {insert legal capacity of person signing the Bid Securing
Declaration}

Name: ----- {insert complete name of person signing the Bid Securing
Declaration}

Duly authorized to sign the bid for and on behalf of: {insert complete name of Bidder}

Dated on -----day of ----- {insert date of signing}